



**The HOUSE OF ARTS & CULTURE**  
The Lebanese-Omani Centre

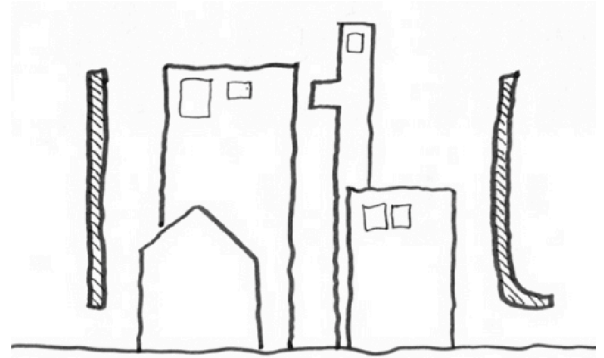
## The HOUSE OF ARTS & CULTURE

Beirut is the leading place in the Middle East arts and culture scene, and this house plays an important role in the education of the youth and of the whole population. So, The HOUSE OF ARTS & CULTURE has to support various artistic and cultural activities, not only these of already evaluated, but also the possibility emerge from now on.

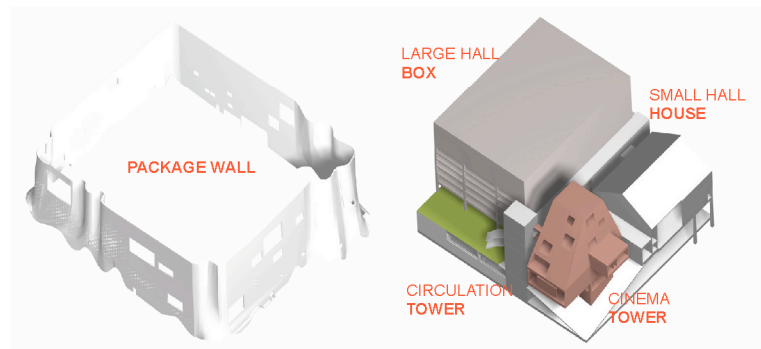
Furthermore, the house should be expected to response to the Mediterranean climate, being low temperature variation range, and to communicate with enviromental city scape, person, and activities.

This scheme can form a continuous skyline to the whole Beirut city, and involve the dynamic activities in that homogeneousness.

Four characteristic volumes (LARGE HALL BOX, SMALL HALL HOUSE, CINEMA TOWER and CIRCULATION TOWER) are connected by some passages. So, Package wall drapes these volumes and exuberance activities around their. This wall performs as the interface between internal and external activities.



Basic concept



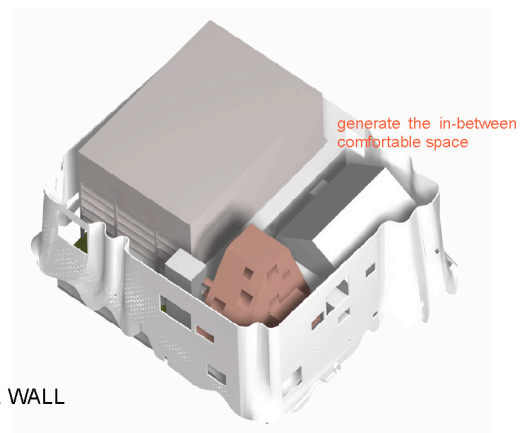
Composition of four volumes and Package wall

## PACKAGE WALL

Package wall drapes four characteristic volumes and performs as the interface between internal and external activities, and generate the in-between comfortable space.

The wall reduces excessive amount of solar radiation.

Its structure is partiality supported by its pleats, by four volumes and their buttress.



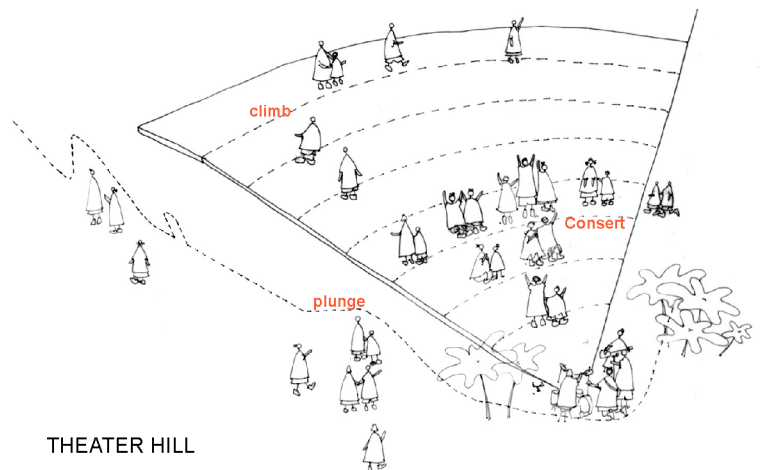
PACKAGE WALL

## THEATER HILL

THEATER HILL is located at the northeast corner of the site, close to the center of new beirut city and Landmark Project being planning.

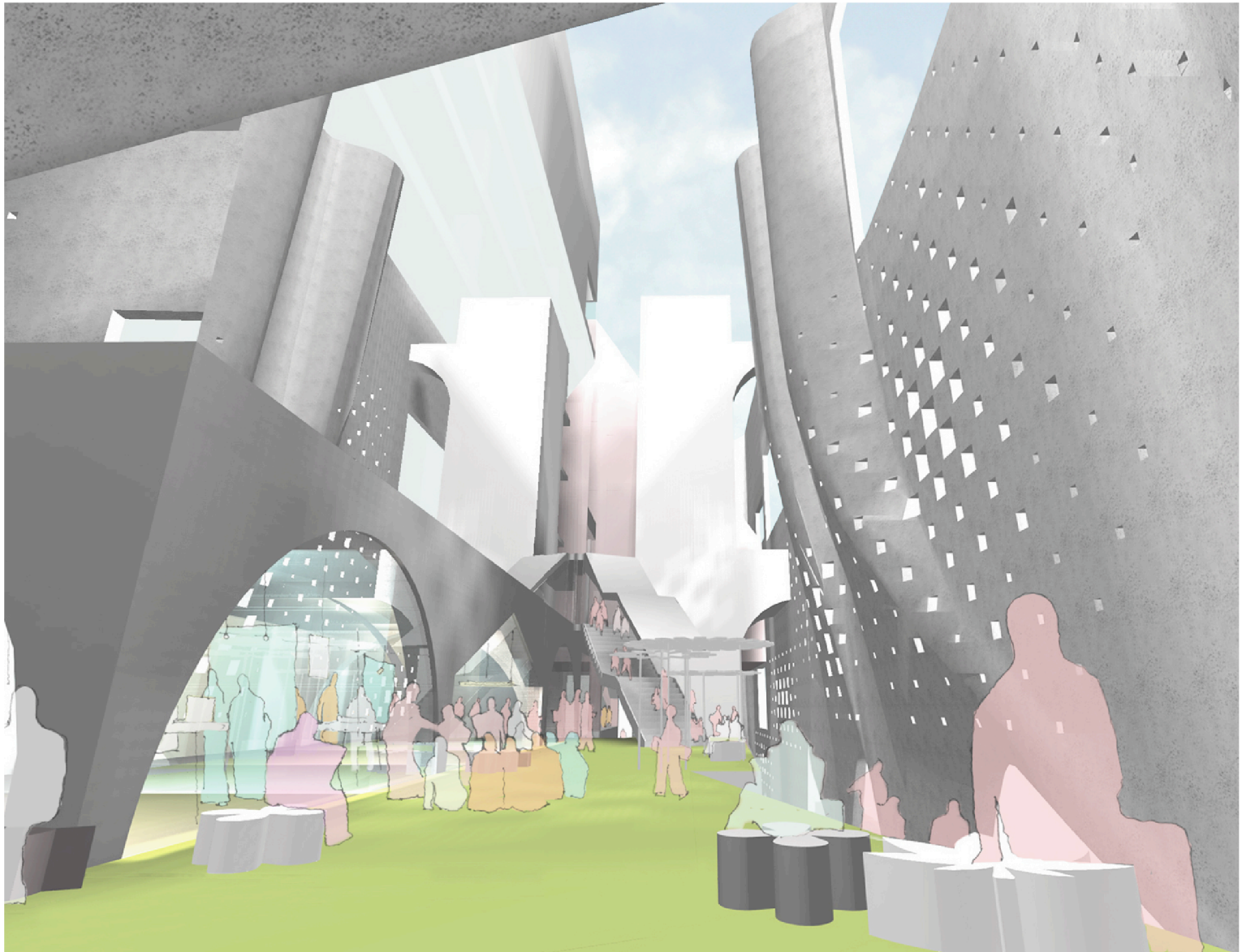
THEATER HILL is an artificial hill connecting no less than 8m vertical interval of the site, and a junction of architectural programme in circulation.

Its form consists of conoid curved surface, so it's not only used as the main circulation, but open-air theater for various activities, small concerts, live performances and so on.



THEATER HILL

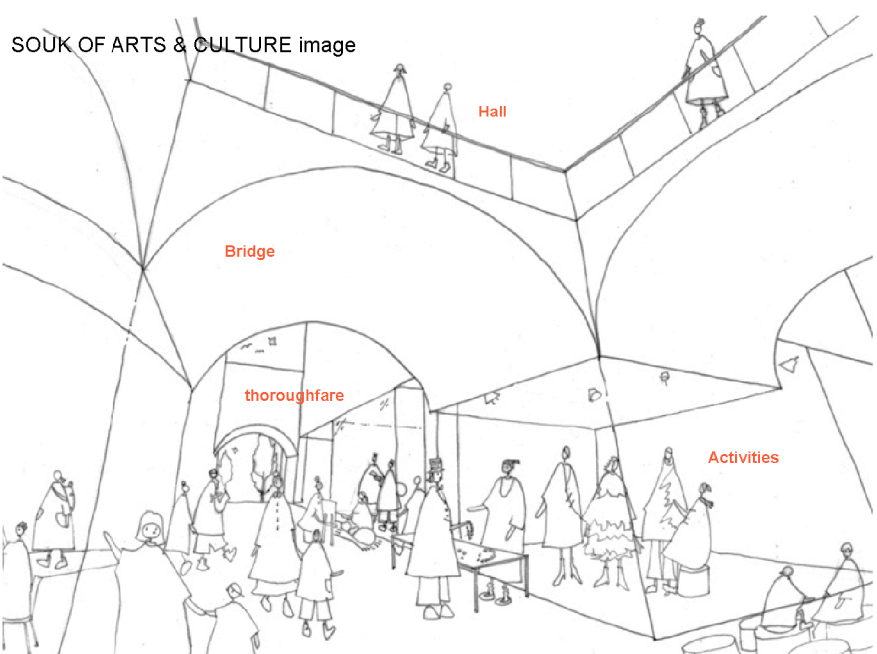




## SOUK OF ARTS & CULTURE

From 1st to 3rd floor having relations with circumferential environment, we allocate the program dedicated to the bustle of activities going on Beirut city at this moment, having not exclusive volumes like conference halls, but small activities like workshops & training rooms. These activities are alongside of some through-passages. Every visitors of this house can happen to encounter other activities. This is the SOUK OF ARTS & CULTURE.

These through-passages and ARTS & CULTURE FIELD serve as platforms for many artistic and cultural activities not supported by limited numbers of rentable rooms.

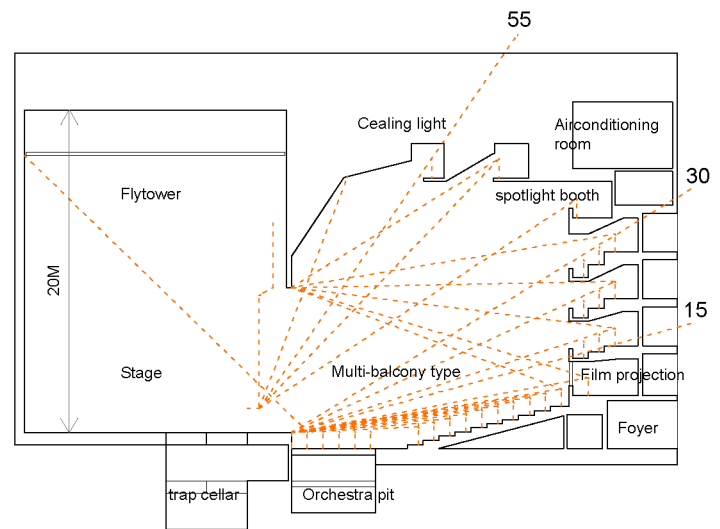


## LARGE PERFORMANCE AND CONFERENCE HALL

Music concerts, theatre, cinema, dance performances and congresses are held in LARGE PERFORMANCE AND CONFERENCE HALL (801 seats).

Large hall is a big square box in its exterior, but its interior outline is a horseshoe form. This form has a strong centrality, and enhance the concentration of the audience. Auditorium is a multi-balcony type (4 stories) to make sense of togetherness in big one-room.

Stage level is connected to the small hall and the delivery level with no steps. This hall has an orchestra pit and a trap cellar, locating under the stage. Dressing rooms shared by the small hall are located in lower level.



Large performance and conference hall section

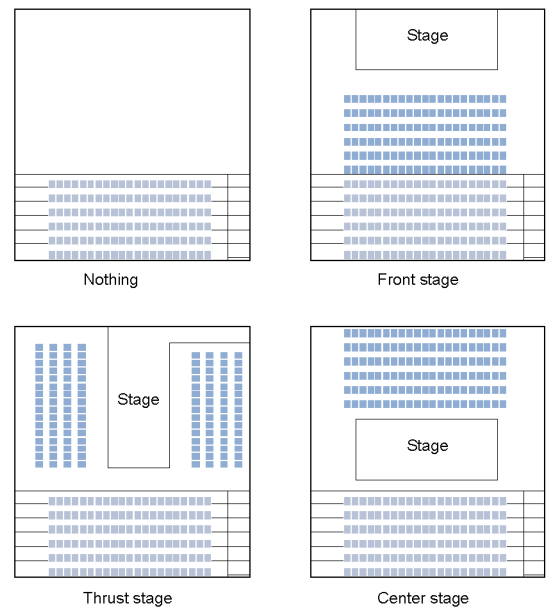
## SMALL MULTIMEDIA PERFORMANCE HALL

Experimental performances (conferences, lectures, recitals, solist concerts, storytellers, movie showing sessions, etc) are held in SMALL MULTIMEDIA PERFORMANCE HALL (maximum 252 seats).

Small hall's exterior outline is a house-icon form.

The half of all seats (126 seats) is fixed and the other half is movable. So various types of stage can compose to each performances (not only front stage, but also center stage and thrust stage, etc).

Small hall level is connected to the large hall and the delivery level with no steps. This hall has an upstairs gallery, and a big window facing outside. Dressing rooms are shared by the large hall.



Variations of small multimedia hall

## HALL(foyer)

HALL(foyer) is Shared by the two performance halls and a movie theater.

This foyer consists of some wide streets, its width is 4m to 8m. This street type foyer is efficient in case of using two or three halls simultaneously.

Also its longness can make it possible to face many types of activities.

You can access from 1st floor reception by elevator, 3rd floor entrance by grand stairs.

