

"A city is a place where a child, crossing it, can see something that will inspire him and let him decide what to do for the whole life."

Louis Kahn

The House is the soul and essence of life. It is where the thought is formed, and where it tries to have, even a first shape, through art. This complex process is completed and improved when in interaction with other processes equally developed.

The aggregation of houses and their interactivity, determines a primordial role in the understanding of CULTURE. It is within the frame of this agglomeration that we see the emergence of a social direction and the evolution of a way to understanding life, which are both in accordance with the Lebanese constant relation to the earth - the natural element that is part of their existence, a real prolongation of their personality.

In this natural geographic frame - the frame of space - and in the continuous cultural, historical, moral mould - the time fact - Lebanon nurtures a oneness of existence, a unity of community life.

The symbol of this nature - unity is the CEDAR, that represents the greatness, the strength, the perpetuality and the incorruptibility.

HOUSE OF ARTS & CULTURE

- It is an interlacement that evokes, either the archetype of the HOUSE, either the symbolic element of the CEDAR.
- It develops through different plain of significant and signify and complex plurifocality, that together determine a space of recognition easily embraced on different scales, connoting its volumetric and functional distribution as place of maximum articulation, interlacement, interaction and junction of multiple functions.
- It draws the characteristics of the cedar expressing his:

- | | |
|----------------------|----------------------------------|
| 1 - Greatness | The size of the different houses |
| 2 - Strength | The notable slab projection |
| 3 - Perpetuality | The archetype of the house |
| 4 - Incorruptibility | The pure atemporal shapes |

Thus the HOUSE of ARTS & CULTURE is formed through a process of aggregation and connection between pure volumes that identify the different functions. Such process can evolve in new spatial configurations in coherence with the existing one.

Shape, size and space give sense to a multiplicity of the single parts determining the unity of the building.

1 - The Gate to the Orient and to the West	A ground floor as public open space with a view axis on every side and a cross diagonal from north - pedestrian part of the down town - to south - the high communication direction
2 - Transition	A filter between the human scale and the city scale
3 - Exchange & interaction	A multiple open space areas accessible also for only passing by individuals
4 - Open to renovation, expansion & improvement	Free floor plans and different possible spatial solutions
5 - Innovative structure & techniques	The new "Transparent Concrete", the interactive glass
6 - Incubator	The Theatre is housed in the "transparent concrete" block similar to a transparent membrane through which what happening inside is viewed from the outside
7 - Fusion between the inside and the outside world	Permeability of the houses (blocks)
8- Environmentally friendly	The use of the ecological materials (wood, stone, green walls) and photovoltaic roof.
9 - Functional roof	Garden roofs
10 - Spatial solutions & interconnected floors	Complexity and unity of the whole aggregation
11 - Interactive digital communication	Vertical and Horizontal circulation as screens to project infos & images

The verbal expression was considered the most important and rapid form of direct communication. Today, digital image becomes a fundamental element in the life of young generation; and as electricity has modified architecture, the instant informatic & digital revolution is revolving all of its parameters. It becomes an integral part of conceiving architecture and developing a project.

2



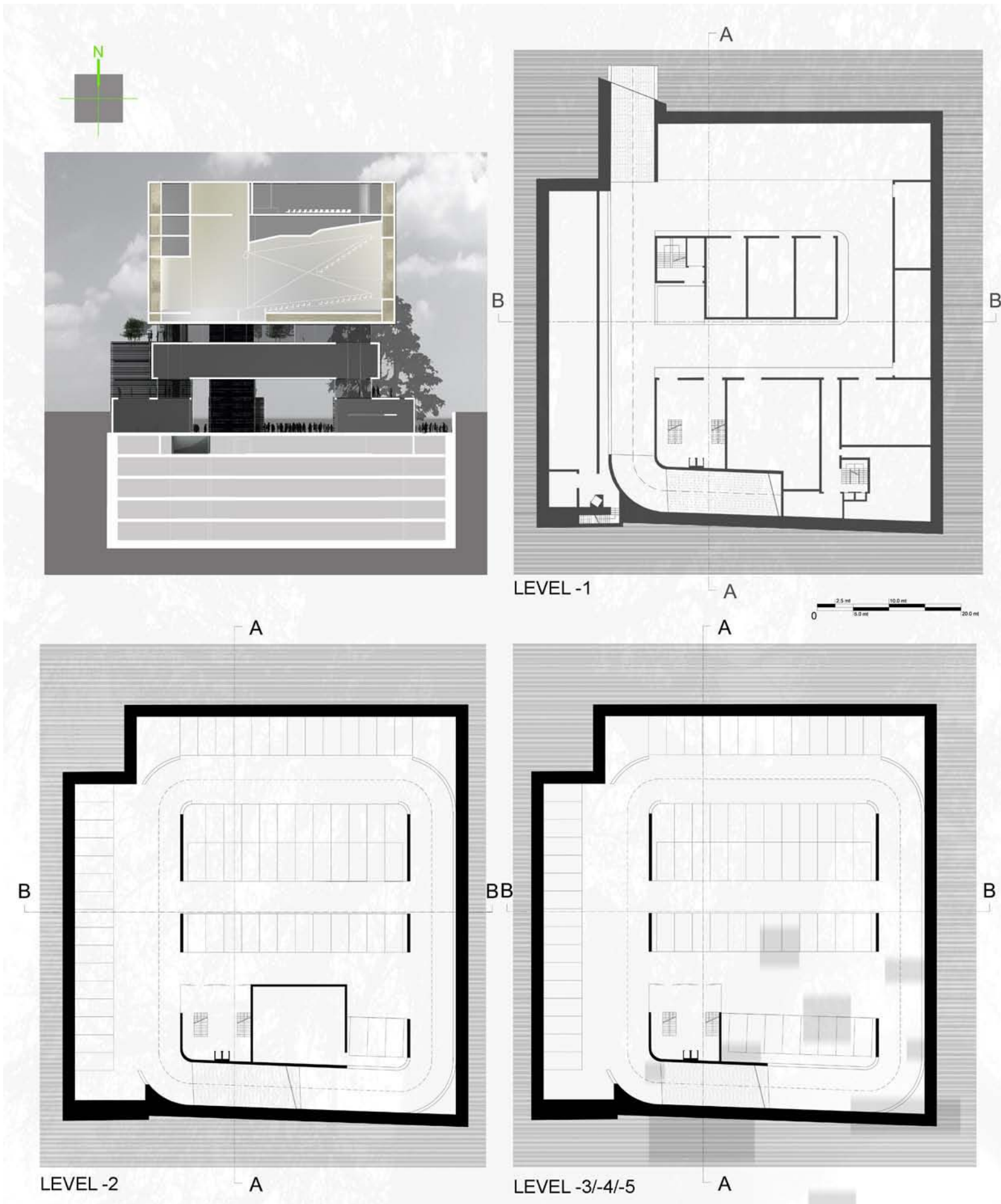
Thus, in the HOUSE of ARTS & CULTURE, such form could not be neglected. It comes to make part of its structure becoming like this a unity with architecture.



The HOUSE of ARTS & CULTURE absorbs the traces of the human existence, thus becoming a sensitive organism that breathes, sleeps and lives.

It will transform into the wrap and the background of the life that flows.

3



4