

THE HOUSE OF ART AND CULTURE IN BEIRUT

Garden of Art and Culture

The **Garden of Art and Culture** (a term used to indicate the nourishing function of gardens where art and culture grow and flourish.

The entire organization is patterned as kaleidoscopic layers, each layer indicative of the civilizations which has generated the cultural mosaic of Beirut.

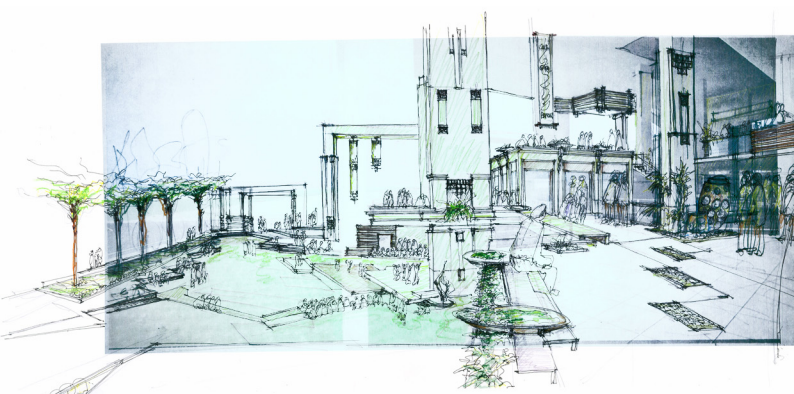
Symbolically the **gardens of art and culture** is developed as layers which metaphorically is connected in all axes symbolizing a connect across layers of civilization.

The green pockets wedged in between give the much desired whiff of fresh air and a break to a unsuspecting visitor from an overwhelming plethora of activity pockets traversing through the arts and culture gardens – a veritable cauldron of vibrancy.

The Ground levels are sculpted into a landscape of stairs & platforms, creating multiple possibilities for access & viewing. This public concourse is fully ventilated & loads of daylight proliferates without any defined boundary fences

The design creates a perforated matrix of gardens & opens spaces throughout the building including the roof garden on the top of decks which help to cut out heat gain, absorb carbon & provide shady outdoor breakout space

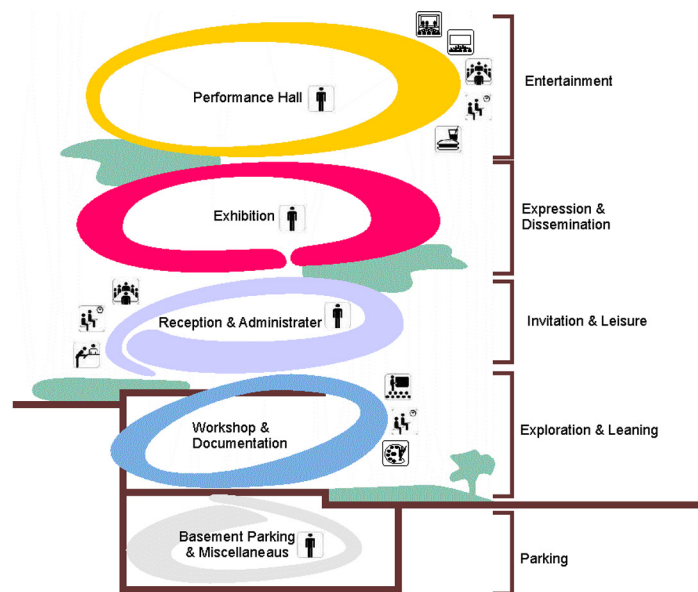
The design of the building is a natural extension of the surrounding park



Organization Structure:

The organization of spaces are so that one moves effortlessly vertically to different levels by means of connecting stairways, creating a spatial experience glutting the senses, educating, exploring, entertaining, dragging into the depths of art appreciation and cultural expression.

Transition occurs vertically from the most public of the open retail into perceptual privacy of the theatre



Horizontal zoning/ Distribution:

The site is zoned into three parts i) A public zone opening towards the city centre. ii) An activity zone housing the activity pavilions and the activity bundles iii) A service zone including a service core.

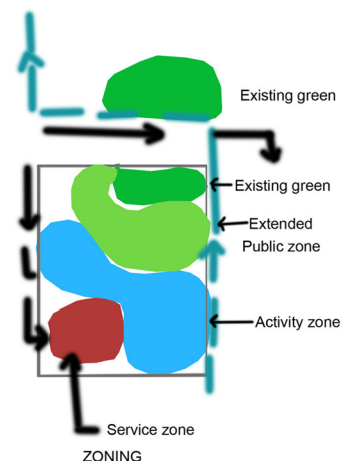


Image of the structure:

“Envisioning the future with a strong eye on the past”

Breathing the essence of heritage is the materials deployed. Sweeping across the bundle of spaces is the natural yellow of the region, textured selectively to deploy the Mediterranean sunlight appearing and disappearing only to reappear as filigree or as a jalli work.

the building reveals its insides to the roads, attracting a casual passerby into the depths within or simply soothing the visual senses for a onlooker. The natural yellow then adds to a sense of celebration, mellowed with touches of glass, frosted to marry the rich heritage with the modern. Dancing to the tunes of the spaces and forms is a rich concoction of wood, stone, limestone and stuccowork for the bulk of the mass.

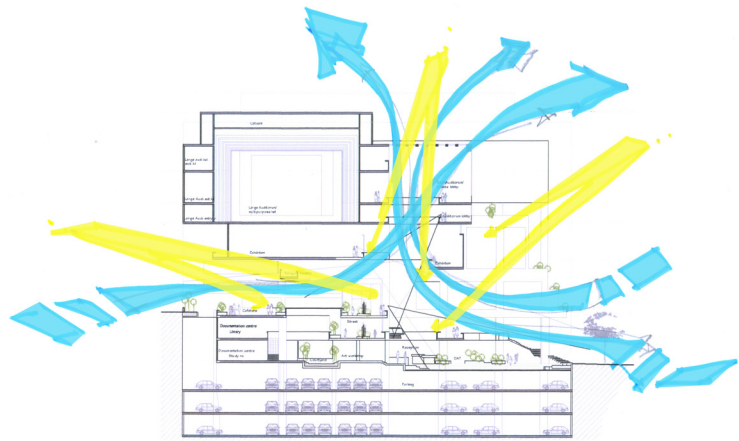
Services integration/ Ease of operation:

Services are integrated in the South West Corner and function independent of the main public areas thereby acting as an effective servant space to the main spaces. The integration makes the service areas compact and achieves ease of operation and maintenance with no interference to the activity spaces.

Crowd management and safety:

The voluminous stairways and high speed elevators offer multiple choices of movement in the horizontal and vertical directions diminishing the possibilities of crowd concentration. Emergency evacuation can be effected in as less as 5 min from any corner of the building. The building opens out into numerous terraces and open courtyards reducing loss in times of fire etc.

Climatic responses: The opening of the building on the North as a way of bringing in glare free North Light are followed by the landscape wedges and open telescopes allowing for ventilation across the floor plates .The ability to passively operate lighting controls heightens the possibilities of making the cultural gardens into a living organism which can brighten and dim itself as desired by the guests



Flexibility: The gardens of art and culture become unique in its ability to unify and subdivide across floors.

1. At the ground level, there is a chance to unify pavilions across three levels or operate them individually.
2. The auditorium, cafeteria, exhibition spaces and display areas lend themselves to modular and organic bifurcation including the possibilities to accommodate and vary a wide variety of furniture arrangements.

The flexible spaces lend themselves to creation of spatial drama and variety from time to time, preserving newness every time one visits the gardens.

Auditorium

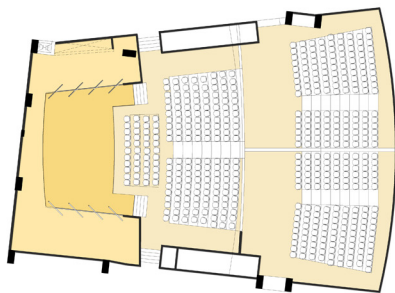
A. Overhead Acoustic Canopy

1. Adjustable acoustic banners

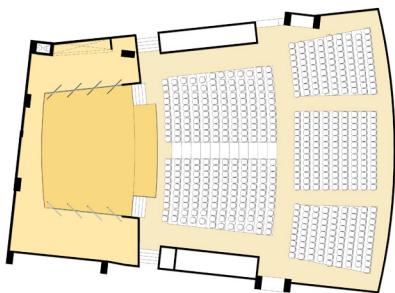
2. Possibility of controlling the reverberation time by opening out the volumes to the reverberation chambers.

B. Flexible stage extensively equipped with coordinated suspension points.

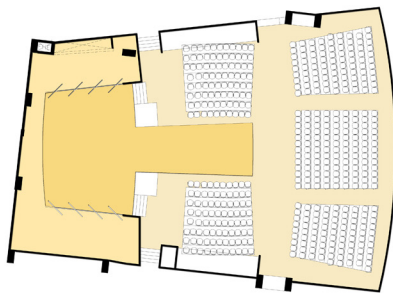
C. The full stage lighting with fiber optic data backbone and audiovisual equipment



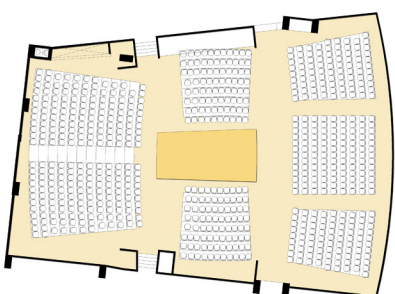
A) Large auditorium can be divided into 3 small auditorium for different functions (Recital mode).



B) The Proscenium shape-Theatre mode Stage with fly tower above, upon which a full set of scenery can be preset.



C) The Open Thrust shape-Orchestra raked seating can be stacked and pit floor can be elevated to make the open thrust stage



D) The Arena Shape

Exhibition Spaces

Variation in Volume gives Flexibility to accommodate variation in size scale and exhibits

Different sections of exhibition spaces have distinct architectural typologies like light quality, room proportions finishes and Materials

The layout of Exhibition spaces and the main circulation to these are made flexible and provide opportunity for the visitors to select multiple routes tailored to the duration

Storage of movable seating to accommodate educational programs in exhibition spaces



Constant RH levels maintained to 50%

Continuous vapor barrier to be provided for exterior walls. Designed with more than the minimum floor loading capacity as the collections may be wall supported, floor supported, suspended from the ceiling. Lighting fixtures used should be UV Shielded to less than 75 microwatts & enclosed to avoid damage to objects in event of lamp breakage Flexible grid of high quality track lighting