

[Introduction]

Lebanon - a historically open society with diverse cultures and faiths nestled in a region where such values are nearly impossible to sustain - has always managed to defy all odds for the better.

Given such, it is lamentable that to much of the global community, thousands of years of all that is cherished and significant about Lebanon remain shrouded.

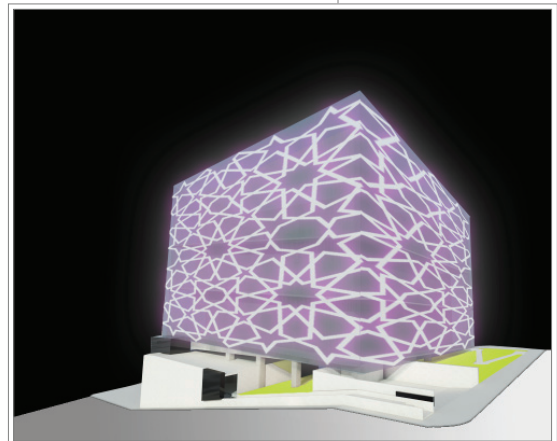
Through our design concept and architectural solutions for Beirut's House of Arts and Culture (HofAC), we aim to **unveil** and showcase the **jewel** that is Lebanon: its exquisite past, its current efforts to stabilize and revitalize, and its future as a critical participant in the meaningful dialogues between arts and cultures of the world.

[Conceptual basis and associated architectural decisions]

Allegorically, a veiled jewel serves as the guiding source of design decisions throughout the project.

As a Beirut icon

- » Multi-layered building envelope acts as the veil through which subtle and varying glimpses of the jewel within are revealed.
 - › While maintaining modern lines, we sculpted the shell to trigger a unique emotional response from every vantage point. Every sight line shall provide a mixture of explicit communication in the foreground, suggestions in the mid-ground, and implicit hints in the background.
 - › External material choices were made to support the internal conversations between light and shadow, the defined and the silhouettes, people and technology, past and future, playful and the conservative, and finally, Lebanon and the world.



As a set of spaces placed at the literal and figurative junction of thoughts

- » For the occupants and visitors of HofAC, primary experience of the architecture occurs at the intersection of the jewel and the veil.
 - › Visitors' primary movements take place between the core exhibit/performance spaces and the envelope. Visitors then become elements of the jewel to those viewing from outside-in, and in a delicate dance with the internal architectural elements, the steady flow of people provide another layer of silhouette and depth.



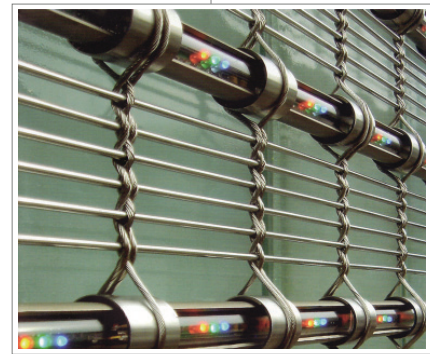
- › As with all veils, visual exchange is bidirectional. While the visitors circulate and rise upward in the structure engaged in inward examination of the jewel (exhibits and performances), they are encouraged to glance outward through the veil to simultaneously experience the gradual unfolding of Beirut. Design intent here is to inspire the visitors to pause and make the connection between their great past, present, and future.

[Functional principles and our technological responses to the programmatic requirements]

Our central approach to addressing the compounded variants in HofAC's programmatic needs is driven by one objective: flexibility – inside and out – while vigorously upholding sustainability goals.

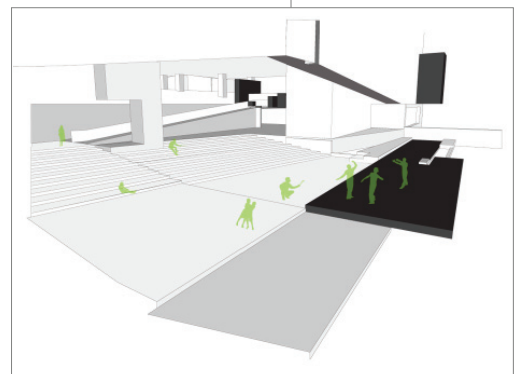
LED mesh layered behind the outermost glass skin |

- » HofAC plans to host a wide variety of exhibitions and performances (from the eclectic, controversial, and youthful popular art to elegant, traditional, and minimal art). In order to support such intent, it is vital that the entire building itself has the means to project its events of the moment on a continuously adaptable manner to the entirety of Beirut.
 - › All four primary facades are essentially a continuous sheer canvas onto which digital imagery associated with the hosted events can be painted and repainted continuously.



Multi-purpose performance and exhibit venue system |

- » All of the main performance and display spaces are systemized and mechanized to allow for the best, most suitable spatial layout per hosted event.
 - › While the primary theatre space is generally more oriented towards live performances, its system can support events ranging from opera, to rock music concert, to cinema screening, to black box theatre.
 - › Secondary theatre space can also be customized per event and offers even more adaptability as it can comfortably support both live and static occasions ranging from public exhibits to private functions – perhaps a Chinese brush painting display, multi-media art installation, a wedding, company meetings, so on and so forth.



Public flexible spaces

- » Exterior spaces surrounding the structure are designed to support a range of activities.
 - › Entry plaza and the gardens provide adaptable spaces where everything from official events to impromptu street performances can be held. While performer and audience areas are identifiable, elements are organized for versatility and independently serve

multiple functions.

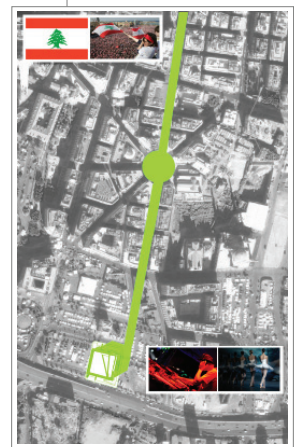
- › Any/all of these spaces can also be used for more mundane daily use such as taking lunch breaks, napping under the shade, and gathering with friends. Landscaping strategies are put in place to equally promote communal social behaviors and solitary respite.

[Integration into Beirut's current and future urban fabric]

HofAC's site represents a unique opportunity within the greater Beirut's urban plan.

A grand finale to Beirut central district's main thoroughfare

- » Located at the edge of the original planned central area's first growth layer, HofAC can serve as the meaningful endpoint at which the main city axis can come to rest. More than symbolic, this forward-looking venue offers a stimulating contrast to the city's maritime roots inherent in the shores at the opposite end of the thoroughfare.
 - › With the dynamic sequence of performances, exhibits, and thought exchanges supported by this institution and its architecture, the people of Lebanon will be served in a valuable way.



HofAC can immediately become the new face of the central district, and gradually mature into an interchange as the district continues to grow around it

- » Majority of Beirut's visitors access the City's central area via the ring road and HofAC occupies a position of priceless visibility as the public enters/exits the district.
 - › This HofAC will be Beirut's own **architectural performance** that continuously redefines itself through its veil. This HofAC can project all of where Lebanon has been, where Lebanon is, and where Lebanon will be.

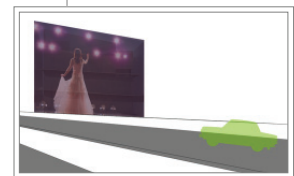


Table of Spaces

	Required Space	Required Area	Actual Area	Located Floor
A.	Reception, Information	435	500	1,2
B.	Performance Theatre, Conference	2434	2450	3,4,5
C.	Exhibition Space	1170	1800	Exhibition ramp, 5
D.	Workshops & Training Rooms	670	700	6
E.	Documentation Centre, Library	640	640	1
F.	National Cinematheque	273	280	7
G.	Cafeteria and Shops	510	500	1
H.	Administration	451	451	6,7
I.	Miscellaneous Spaces	305	350	1
J.	Technical Rooms	500	500	1
K.	Parking and Delivery	7800	7800	Delivery Doc, B1,B2, B3
Additional Space				
L.	Amphitheatre	507		Exterior @ Front Plaza
M.	Sculptural Garden / Exhibit space	700		Exterior @ Sculptural Garden
Total:		15188	15971	