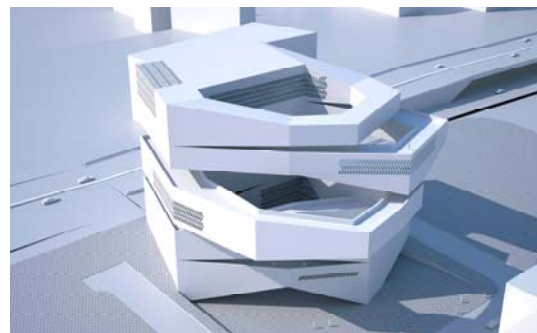
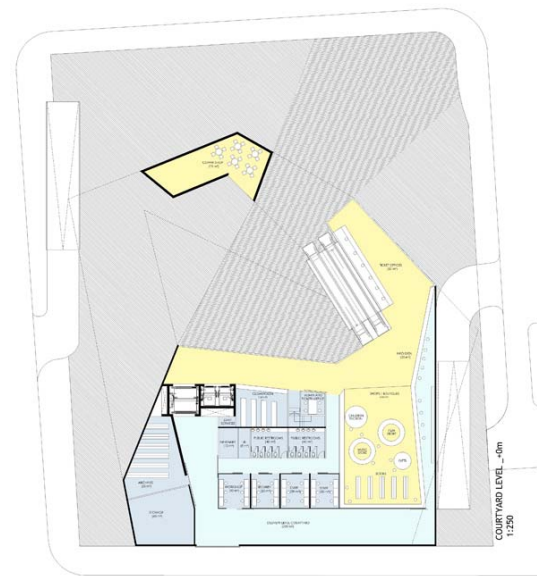




OPEN HOUSE CONCEPTUAL STATEMENT

The Open House offers an iconic addition to the Beirut cityscape and a cultural catalyst for artists and the community at large. The building's concrete façade cracks open at irregular intervals to partially reveal a central courtyard—a collision of the new and the traditional. Five sculptural rings are stacked playfully on top of each other creating unique spaces for the building's five primary functions. The concrete exterior is perforated to create light patterns that shift throughout the day. The floors and ramps form a spiraling promenade that functions as an echo of the streets outside; this circulation systems interconnects and blurs the different spaces of the building so that a visitor not only attends a performance, she also sees artists at work and can mingle with them on the public rooftop. The Open House transforms passive consumption of culture into engaged consumption, or perhaps even participation, through an open invitation to discover and explore the creative process in unexpected ways.





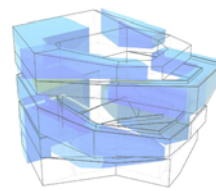
PROGRAM

The large courtyard at the ground floor entrance offers not only an enticing new public space for Beirut but also a grand interior patio sheltered by the stack of five rings overlooking it. It is a meeting space and an outdoor venue for performances. The triangular shapes of the white and grey outdoor paving form a kinetic pattern providing a playful counterpart to the perforations dispersed on the façade of the building.

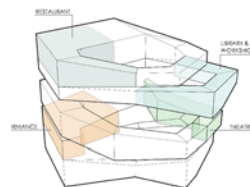
The second main public outdoor space is the rooftop terrace at the end of the visitors' spiral journey; an exterior viewing platform offers breathtaking and previously inaccessible views of the city. It is both a destination within the building and an urban landmark that provides a new vantage point into the city.

The building's core structure includes the main auditorium, a two-level space for 950 guests and a 17m wide by 10m deep stage with a mechanical lift from the delivery dock on level minus three. This large hall is elevated above the entrance level to provide an orchestrated entrance sequence: visitors walk across the courtyard, experiencing views up to the sky framed by the building, before entering the performance hall.

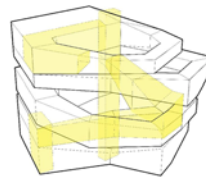
PROGRAM



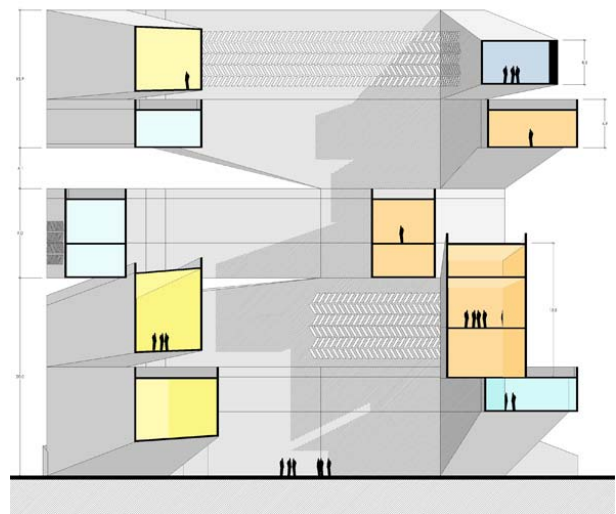
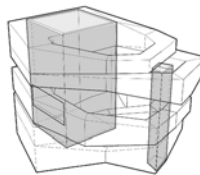
MAIN PROGRAMS DIAGRAM



CIRCULATION DIAGRAM



STRUCTURAL DIAGRAM





The public library is a grand space with a tall ceiling filled with natural light from both sides: the exterior and the interior courtyard. It functions both as a central hub located in the middle of the building and a final destination for study with intimate spaces for private work. Sweeping views of the city and into the courtyard and across to the other spaces in the Open House are precisely orchestrated by the perforations in the façade. The perforation pattern spans from floor to ceiling in the grand public areas and shrinks in the private spaces to compliment a more human scale. To work as both as an intellectual and spatial incubator in order to nurture and attract artists and visitors, the library must rigorously curate its content to provide the most relevant and progressive media.

The exhibition space is conceived as a grand gallery space: the public can visit a specific exhibition or meander through it on their way to other destinations in the building. Special attention has been given to the daylighting strategy of the exhibition space to ensure optimum lighting conditions for viewing. The architectural strategy aims to create flexibility for hosting progressive exhibitions relating to the Open House's mission. In line with the general concept of the building, the goal is to create

maximum engagement on the part of the visitor.

The heart and soul of Open House are the creative workshops. Located at the very top of the building, artists have been granted prime placement with some of the building's best views of Beirut. Careful attention has been given to the requirements of the artists spaces in terms of spatial configuration and daylighting. Because the requirement for artists working in different media vary, the studios have been designed to ensure flexibility while not compromising quality. Again, the perforations are used to provide different types of daylighting as necessary.

Instead of isolating each element, the building's program components are circulation spaces, or streets, with constant activity and exchange of ideas. The architecture aims for hyper-functionality and hyper-interaction. The architectural language of ramping, cracking, overlapping, interweaving, blurring, is meant to provide a rich spatial framework for artists and visitors to meet, discuss, create, reflect, and perform. The building challenges traditional separations between private art space (studios) and public art space (theaters) by pushing visitors closer to the space of art production.



FIVE RINGS: A CONSTANT PERFORMANCE

The Open House's playful architecture and dynamic relationship with the surrounding city will make it an innovative and active incubator for the creation of new forms of expression in art, dance, performance, video, cinema and music.

The Open House's interlocking, overlapping, but not identical levels symbolize bringing the diversity of the city inside, through a dynamic form and flexible space. We believe that a formally rigid and programmatically static environment is stagnant. A successful building must express the city's capacity to adapt, transform and reinvent its distinct culture. The Open House, like an Open City, is one that is never complete; it is ever growing, changing and evolving.

The movement of the human body up the ramp and along the rings creates a constant performance and interaction between each part of the building. This movement is a metaphoric reference to the process of creation: a constant dynamic exploration. The proposed building explores the idea of sculpting with light and movement, beginning with an interior courtyard as the main source of inner natural light, and continuing throughout the building with subtle glass window

perforations that create light patterns which shift as the day progresses. The Open House simulates and stimulates movement and creation, extending the streets of Beirut.

