



House of Arts & Culture



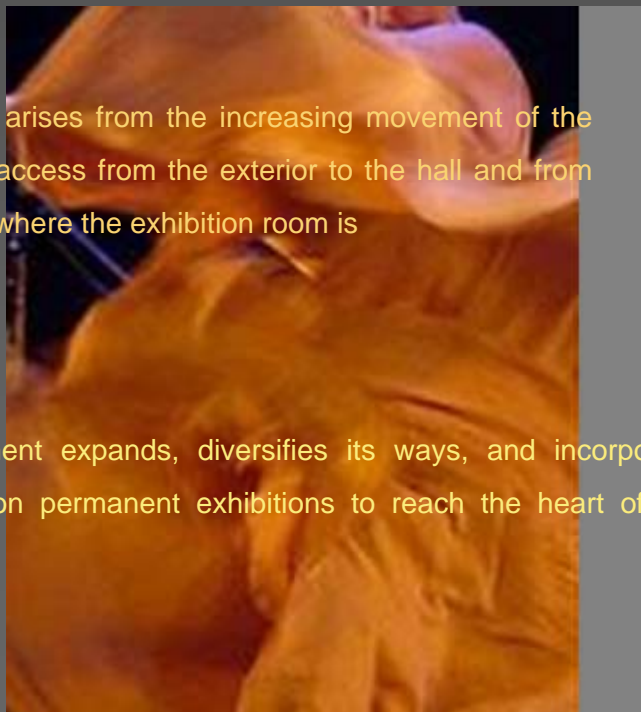
The rotations of the dances with the sounds of their melodies together with the tragedies and the comedies rise from the deep bottom making a spiral increasingly ascending towards infinity

Similarly a rose embraces its petals like a spiral. When the petals open they expand allowing the air to wrap and circulate among them



This House of Arts and Culture arises from the increasing movement of the spiral. According to this people access from the exterior to the hall and from there they go up to the first floor where the exhibition room is

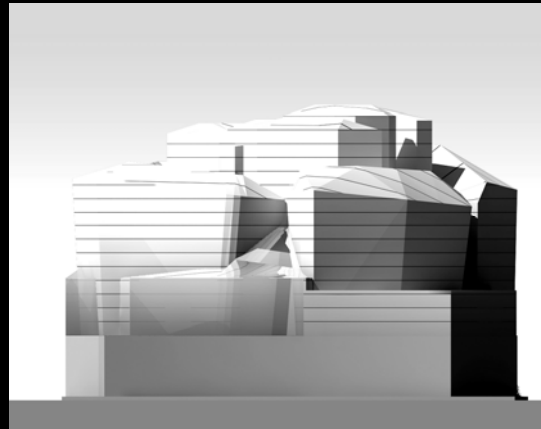
Then, the movement expands, diversifies its ways, and incorporates the permanent and non permanent exhibitions to reach the heart of the rose among the petals.



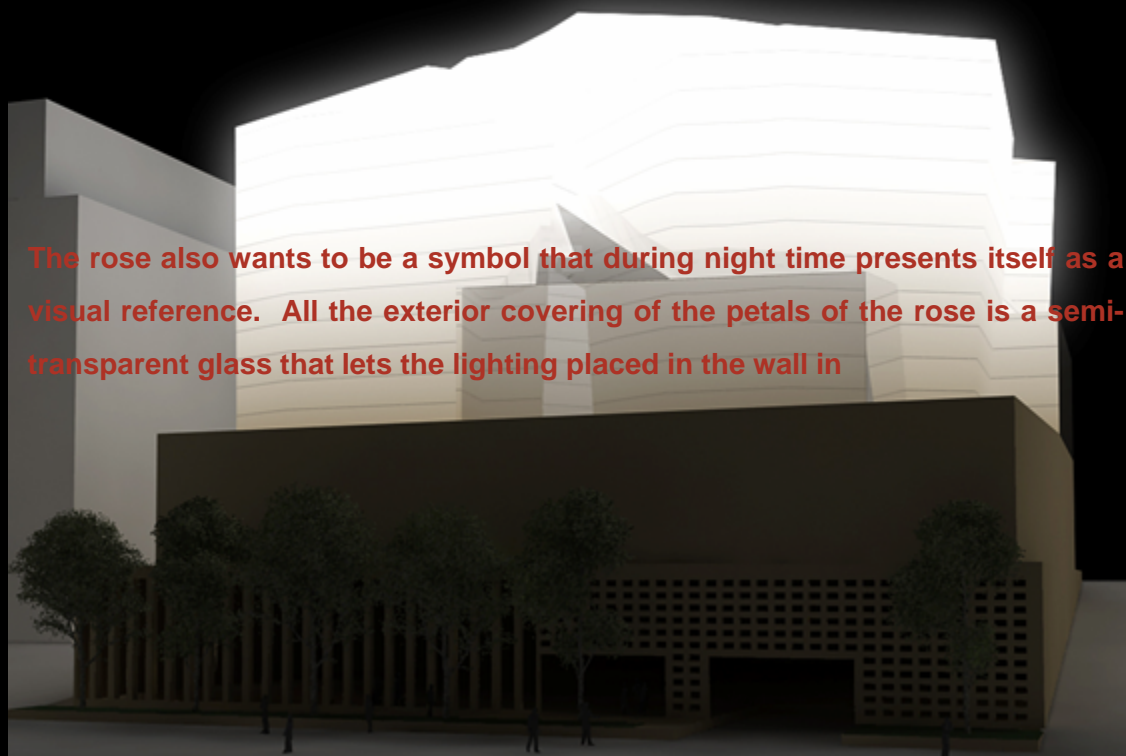


House of Arts & Culture

But the movement does not stop because in the Large Performance Hall, the arrangement of the program is also in movement. There is no symmetry: not in the forms, not in the program, and not in life. The spectator is individual and each seat supposes an individual and unique perception.



This is the House of Arts and its means movement like the air circulating among the petals. At the same time, a rose means the liberty which is necessary to create and it also means the fraternity of whom gives it as a present.

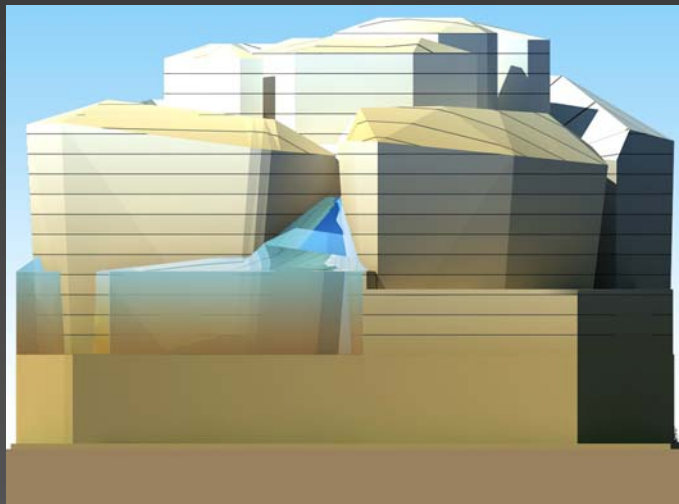


The rose also wants to be a symbol that during night time presents itself as a visual reference. All the exterior covering of the petals of the rose is a semi-transparent glass that lets the lighting placed in the wall in



House of Arts & Culture

This rose has the colour of the stone of its country. Its petals are covered by elements of coloured crystal that are used as an external skin of the concrete walls that hold the 35 mts arch.



The two bottom prisms are also two stone petals. At the same time, a rose means the liberty which is necessary to create and it also means the fraternity of whom gives it as a present.

The rose also wants to be a symbol that during night time presents itself as a visual reference. All the exterior covering of the petals of the rose is a semi-transparent glass that lets the lighting placed in the wall in

The house has three fundamental levels: access, exhibitions, and a concert hall. An intermediate level in between the first and second levels has a more administrative character.

The proposed green area expands.

All the spaces of this program are functionally and conceptually connected.