

# HOUSE OF ARTS AND CULTURE\_BEIRUT

DEFINED BY ITS FACETED EXTERIOR THE “HOUSE OF ARTS AND CULTURE” REINVENTS THE TRADITIONAL SPACE OF A CONCERT HALL THROUGH THE FLEXIBILITY OF ITS MORPHOLOGY AND ITS SHAPE AND ITS INNOVATIVE USE OF MATERIALS. IN THIS WAY, IT BECOMES THE RISING SYMBOL OF THE REBIRTH AND DEVELOPMENT OF A NATION’S CULTURAL IDENTITY THROUGH ITS DANCING TRANSLUCID FABRIC VEILS THAT EMBRACE THE BUILDING.

## PROPOSAL

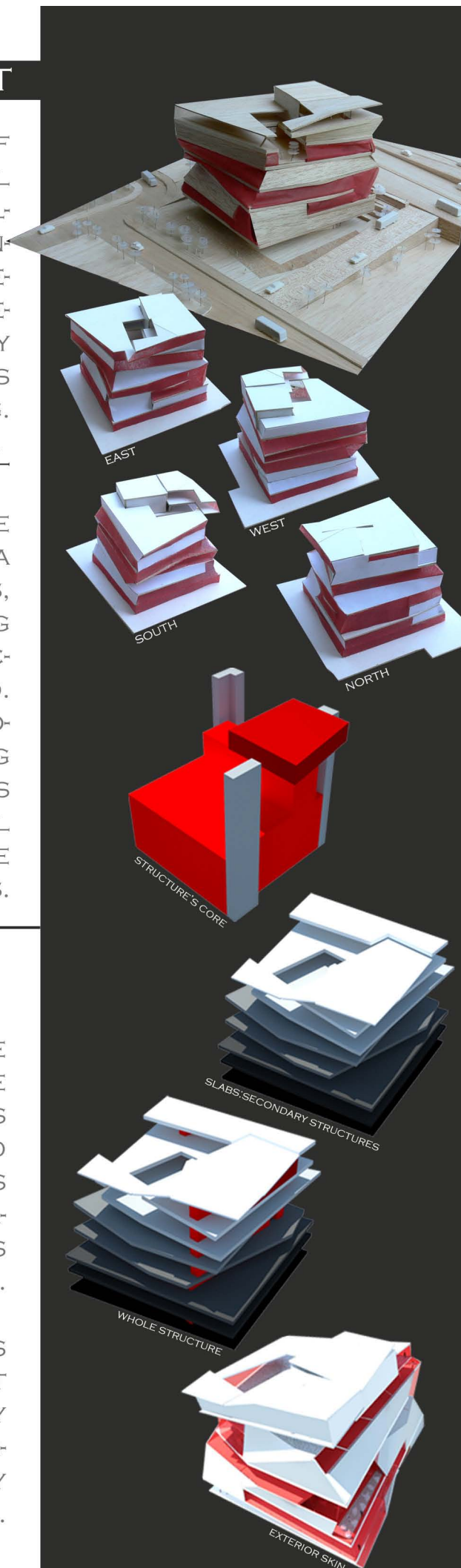
FOR THE PROPOSAL, WE HAVE DEFINED THE ESSENCE OF THE “HOUSE OF ARTS AND CULTURE” AS A RADIANT INCUBATOR. AN ENTITY THAT TWISTS, CURLS, OPENS AND TRANSFORMS ITSELF EMBRACING ITS CORE: THE GRAND PERFORMANCE HALL, ACCORDING TO THE NEEDS REQUIRED.

A PERMEABLE SPACE WHICH MAY CHANGE ITS ATMOSPHERE INTO TRANSPARENCY OR GLAZE DEVELOPING LIGHT/SHADOW PHENOMENA. IT IS THROUGH THIS OBSERVATION POST EFFECT THAT THE CITY WILL BECOME INVOLVED IN THE LATEST AVANT-GARDE TRENDS.

## ICON

IN CONTRAST TO MOST PUBLIC BUILDINGS, THE HOUSE OF ARTS AND CULTURE OF BEIRUT SHALL BE HELD HOSTAGE BY THE CITY WHICH WILL BE WITNESS TO ALL ITS VARIED CULTURAL VENUES THAT UNFOLD WITHIN THE LIGHTNESS OF ITS “STRUCTURE” IN THIS SPIRIT, THE BUILDING WILL RISE FROM ITS FOUNDATION LEAVING A PLANTA LIBRE WHICH CONSOLIDATES THE SURROUNDING PUBLIC SPACE.

FORMALLY, THE GRAND PERFORMANCE HALL WORKS AS THE STRUCTURE’S CORE WHICH IS BLURRED OUT BY THE SUPERPOSITIONING OF SLABS, SECONDARY STRUCTURES, THAT DISGUISE ITS NUCLEAR HIERARCHY. WE POSITIONED THE SECONDARY PERFORMANCE HALL AS A CROWNING ELEMENT.



---

## FACADES

By the usage of traslucid and semi traslucid Mylar Fabrics we propose the components that shape the Architectural Sculpture in opposition to the concrete that will be utilized for all other private programs. In this way, the fabric will gain even more protagonism by its employment as cuddling ribbons that metaphorically resemble the helix of life.

Once again, its see-through character will reinforce its lightness by becoming Beirut's

Cultural night lantern that will shine onto the city projecting a constant ever changing show that all citizens will engage in. Thanks to the fabric shades that cloathe the façade, permanent change will be present as required. The House of Arts and Culture will remain open or veiled to the world as need be.

This characteristic is taken a step further by the advantageous reinterpretation of the

Planta libre concept given the fact that there will be no obstructive elements, instead it will be equipped with "guillotine frames" that will blend the Cultural House from its womb city, Beirut.

---

## SUSTAINABILITY

A sustainable design has been taken into account in order to reach the utmost performance. The building shall make use of its major character, the fabric shades, to maintain a ventilation system that will keep the premises cool by the circulation of air currents. Hot air will enter through the bottom natural airshafts; cool air will exit through top shafts, leaving the premises cool and well ventilated. Said shades allow for comfortable shadow creation without halting the intake of light. Given the oidal perimeter walls, the fabric will provide the perfect solution to enrich the quality, luminosity and spatial temperature.

---

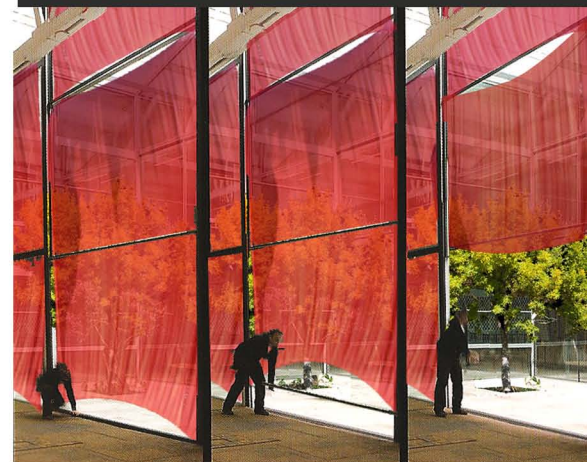
## STRUCTURE

Mainly composed by a hard block of 30 cms. Wide walls to which slabs are

Attached and held by perimetral pillars. On the other hands independently structured fabric frames are rolled up manually. Said frames are "hang" 20 cms. Off the main structure, leaving open channels for cross ventilation.



OPEN OR VEILED AS NEED BE.



GUILLOTINE FRAMES



LANTERN FOR THE CITY