

## Design Concept

A closed volume stretched to the sides creating two passages in a crossing.

Once inside the crossing you can appreciate the whole building and all its functions while standing in one central spot.

This building is best experienced when you enter inside the crossing.

From a distance the openings in each one of the four facades only gives a tempting preview of what is going on inside.

The glass facade inside the crossing is the climate border between indoor and outdoor.

The closed exterior of the building is not just protecting from the sun.

It also makes a conscious choice not to compete as a landmark while surrounded by a rich mix of shiny bank offices, skyscrapers and glamorous suoqs.

If this new building would try to compete as a landmark, shouting until you run out of air would become a serious risk.

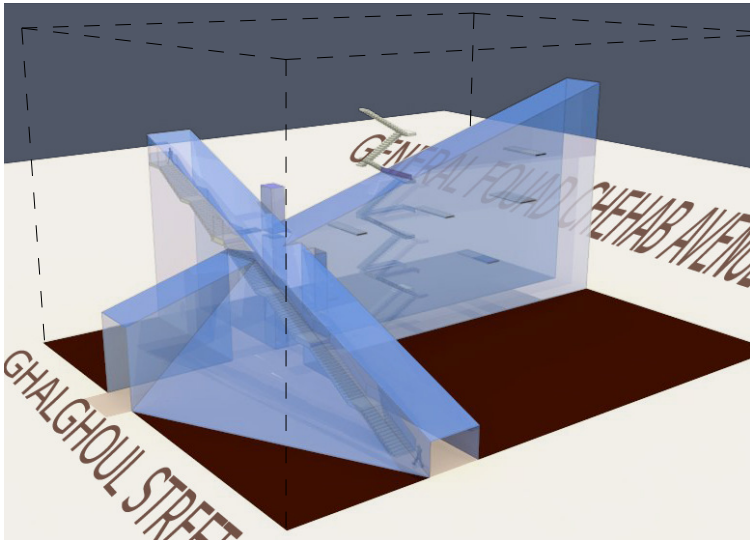
All circulation in the building takes place in, or in connection to, the crossing.

The main staircase is hanging outside the inner glass facade and leading all the way up to the exhibition hall.

It is the dominant feature together with the many bridges connecting different sides of the crossing in numerous places.

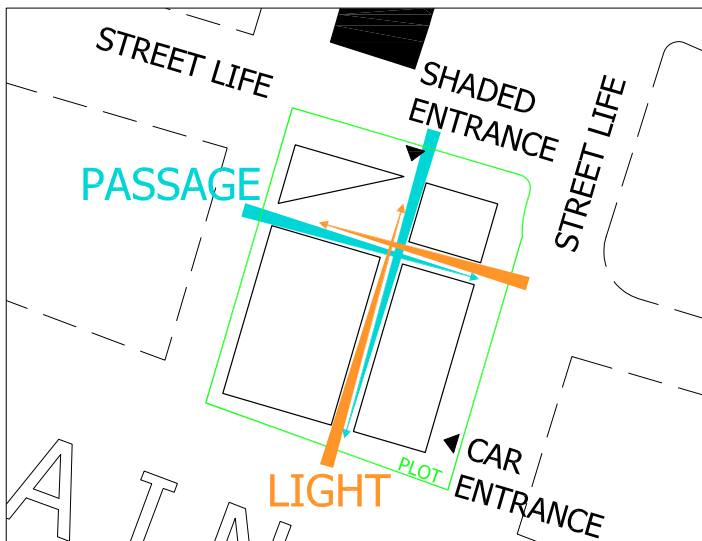
The outer facade is made of sandstone, widely used in the surroundings in both contemporary and historical architecture.

The wall pattern on the facade is new but the measurement of each stone has historical references.

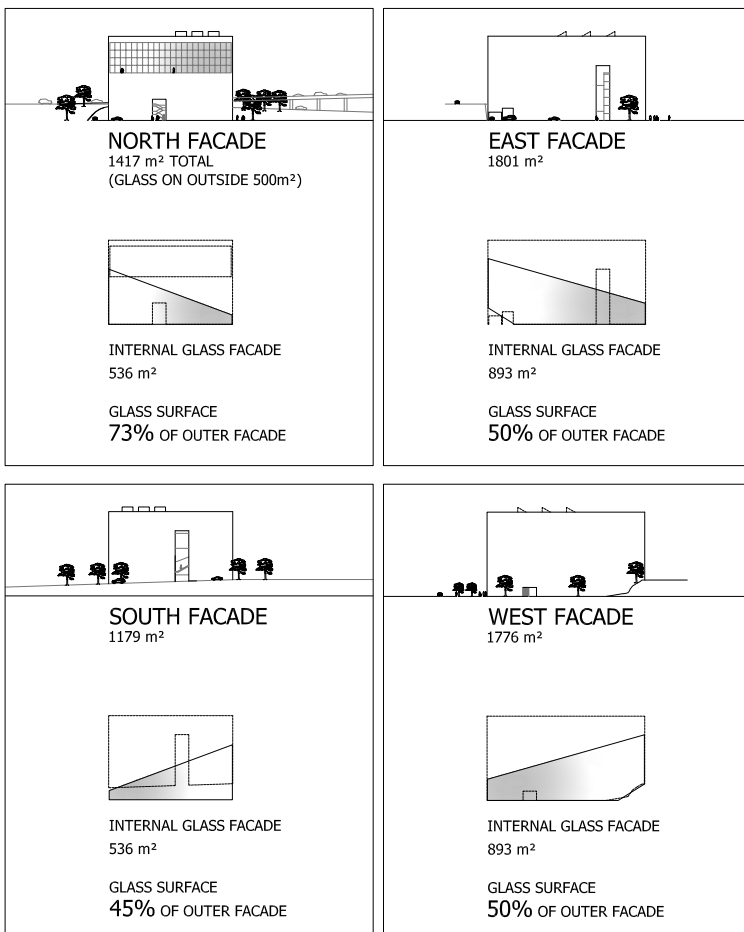


The crossing with glass facades.

It takes light and visitors in to the building



Concept on Lot 128-4



Facade on the inside:

A glass facade connects the inside and outside of a building but the libaneese sun means extreme air conditioning needs when using glass

None of the outer facades has glass exposed to direct sunlight but the glazed area of the inside facade equals 54% of the outer facade

## Summary of Surface Areas

| Spaces                              | AREAS PROGRAMME | AREAS PROJECT                   |
|-------------------------------------|-----------------|---------------------------------|
| A. Reception, Information           | 435             | (659) 116                       |
| B. Performance and Conference hall  | 2 434           | 2435                            |
| C. Exhibition Spaces                | 1 170           | 1249                            |
| D. Work and Training rooms          | 670             | 651                             |
| E. Documentation Centre             | 640             | 830                             |
| F. Cinematheque                     | 273             | 276                             |
| G. Cafeteria and commercial spaces  | 510             | 608                             |
| H. Administration                   | 451             | 628                             |
| I. Miscellaneous Spaces             | 305             | 306                             |
| J. Technical rooms                  | 500             | 742                             |
| K. Parking and delivery             | 7 800           | 8932                            |
| <b>TOTAL USEFUL SURFACE</b>         | <b>15 188</b>   | <b>16862</b>                    |
| Horizontal and vertical circulation | 700             | (horizontal incl. In TOTAL) 280 |

| FUNCTION                              | USEFUL AREA PROGRAMME M2 | USEFUL AREA PROJECT M2      |
|---------------------------------------|--------------------------|-----------------------------|
| <b>A. RECEPTION &amp; INFORMATION</b> | <b>435</b>               | <b>(659 incl Plaza) 116</b> |
| A1. Reception Hall                    | 300                      | (543 M2 Roofed Plaza) xx    |
| A2. Ticket offices                    | 50                       | 25                          |
| A3. Information desk                  | 25                       | 24                          |
| A4. Security room                     | 20                       | 15                          |
| A5. Public restrooms                  | 40                       | 35                          |

common for ticket/info/wc 17

| <b>B. PERFORMANCE &amp; CONFERENCE HALL</b>                 | <b>2 434</b>   | <b>2435</b>                                   |
|---|----------------|---|
| B1. Hall  | 300            | 372   |
| B2. Butlery   | 15             | 15  |
| B3. Public restrooms  | 40             | (see Reception and Cafeteria) xx              |
| <b>B4. Large Performance and Conference Hall</b>            |                |   |
| Hall 800 Places   | 1 000          | (incl. Seats, Stage, Backstage, Balcony) 1014 |
| Lighting control room                                       | 15             | 38  |
| Sound control room  | 15             | 13  |
| Room for film projection                                    | 15             | 18  |
| Recording room  | 10             | 11  |
| Interpretation booths                                       | 4 X 5 m2 = 20  | (2x11) 22                                     |
| <b>B5. Small Multimedia Performance Hall</b>                |                |   |
| Hall 250 places   | 300            | 295   |
| Lighting control room                                       | 10             | (shared) xx                                   |
| Sound control room  | 10             | (shared) xx                                   |
| Room for film projection                                    | 10             | (shared) xx                                   |
| Recording room  | 10             | total 30                                      |
| <b>B6. Adjoining Rooms Common To Both Performance Halls</b> |                |   |
| Individual dressing rooms                                   | 2 X 15 m2 = 30 | 34  |
| Individual dressing rooms                                   | 6 X 10 m2 = 60 | 46  |
| Double dressing rooms                                       | 6 X 10 m2 = 60 | 30  |
| Collective dressing rooms for men                           | 40             | 32  |
| Collective dressing rooms for women                         | 40             | 32  |
| Restrooms and showers for the collective dressing rooms     | 2 X 25 m2 = 50 | 28  |
| Foyer for the artists                                       | 30             | 90  |
| <b>B7. Meeting Rooms</b>                                    |                |   |
| Big meeting room 50 persons                                 | 60             | 58  |
| Projection room   | 10             | 14  |
| Interpretation booths                                       | 4 X 3 m2 = 12  | 15  |
| Small meeting room 30 persons                               | 40             | 39  |
| Projection room   | 10             | (shared with big meeting room) xx             |
| Interpretation booths                                       | 4 X 3 m2 = 12  | (shared with big meeting room) xx             |
| <b>B8. Movie Theater</b>                                    |                |   |
| Room 200 persons  | 200            | 202   |
| Projection room   | 10             | 9   |

| <b>C. EXHIBITION SPACES</b> | <b>1 170</b> | <b>1249</b> |
|-----------------------------|--------------|-------------|
| C1. Lounge                  | 100          | 200         |
| C2. Exhibition Room         | 1 000        | 974         |
| C3. Workshop                | 50           | 53          |
| C4. Staff Restrooms         | 10           | 10          |
| C5. Butlery                 | 10           | 12          |

| <b>D. WORKSHOPS &amp; TRAINING ROOMS</b> | <b>670</b>      | <b>651</b> |
|--|-----------------|------------|
| <b>D1. Workshops</b>                     |                 |            |
| Sound studios                            | 3 X 20 m2 = 60  | 58         |
| Cinema/video/editing                     | 3 X 20 m2 = 60  | 59         |
| Photo Laboratories                       | 2 X 10 m2 = 20  | 19         |
| Computer rooms                           | 2 X 30 m2 = 60  | 50         |
| Printing room                            | 30              | 26         |
| Theatre and music Workshop               | 3 X 50 m2 = 150 | 138        |
| Dance workshop                           | 50              | 70         |
| Arts workshop                            | 2 X 50 m2 = 100 | 94         |
| Classrooms                               | 3 X 30 m2 = 90  | 96         |
| <b>D2. Restrooms &amp; Showers</b>       | 50              | 41         |

| <b>E. DOCUMENTATION CENTRE</b>      |             | <b>640</b> | <b>830</b>                          |
|-------------------------------------|-------------|------------|-------------------------------------|
| <b>E1. Library</b>                  |             |            | multifunctional space in centre 200 |
| Reception desk                      | 14          |            | 26                                  |
| Reading room                        | 60          |            | 20                                  |
| Shelves                             | 300         |            | 353                                 |
| Storage for books in-stock          | 50          |            | 45                                  |
| <b>E2. Audiovisual Service</b>      |             |            |                                     |
| Reception desk                      | 13          |            | (common with Library) xx            |
| Listening and viewing stations (15) | 45          |            | 35                                  |
| Storage                             | 20          |            | 35                                  |
| <b>E3. Study Rooms</b>              | 6 X 8 m2 =  | 48         | 50                                  |
| <b>E4. Offices</b>                  | 3 X 12 m2 = | 36         | 26                                  |
| <b>E5. Workshops</b>                |             | 30         | 20                                  |
| <b>E6. Restrooms</b>                |             | 24         | 20                                  |

| <b>F. NATIONAL CINEMATHEQUE</b>   |             | <b>273</b> | <b>276</b> |
|-----------------------------------|-------------|------------|------------|
| <b>F1. Administrative Offices</b> |             |            |            |
| Curator                           | 16          |            | 20         |
| Manager of technical services     | 12          |            | 11         |
| Manager of distribution           | 12          |            | 11         |
| Secretariat                       | 12          |            | 12         |
| Staff Offices                     | 2 X 12 m2 = | 24         | 22         |
| Restrooms                         | 12          |            | 12         |
| <b>F2. Storage Rooms</b>          |             |            |            |
| Conservation of printing elements | 50          |            | 45         |
| Conservation of positive copies   | 60          |            | 55         |
| Projection Copies                 | 20          |            | 18         |
| Reception and sorting space       | 20          |            | 25         |
| Workshop for copies control       | 20          |            | 25         |
| Cleaning the copies               | 15          |            | 20         |

| <b>G. CAFETERIA &amp; COMMERCIAL SPACES</b>     |     | <b>510</b> | <b>608</b>                     |
|---|-----|------------|--------------------------------|
| <b>G1. Cafeteria</b>                            |     |            |                                |
| Restaurant 125 places                           | 200 |            | 180                            |
| Kitchen and related areas                       | 100 |            | 104                            |
| Public restrooms                                | 30  |            | 32                             |
| <b>G2. Shops &amp; Boutiques</b>                |     |            |                                |
| Bookshop, CDs and DVDs sale, posters, souvenirs | 150 |            | (165+Reading balconies 95) 260 |
| Boutiques stock                                 | 30  |            | 32                             |

| <b>H. ADMINISTRATION</b>   |             | <b>451</b> | <b>628</b>                              |
|--|-------------|------------|---|
|  |             |            | Open office space incl. Circulation 230 |
| <b>H1. Director Office</b>   | 30          |            | 29                                      |
| <b>H2. General Secretary Office</b>                                | 24          |            | 23                                      |
| <b>H3. Waiting Room</b>  | 15          |            | (see also open space) 7                 |
| <b>H4. Meeting Rooms</b>   | 40          |            | 55                                      |
| <b>H5. Private Restrooms</b>                                       | 8           |            | 8                                       |
| <b>H6. Administrator Office</b>                                    | 24          |            | (see also open space) 14                |
| <b>H7. Offices for Programme Planning Managers</b>                 | 6 X 12 m2 = | 72         | (see also open space) 67                |
| <b>H8. Offices for Managers Responsible for Leasing the Spaces</b> | 2 X 16 m2 = | 32         | (see also open space) 22                |
| <b>H9. Offices for Trainees</b>                                    | 4 X 12 m2 = | 48         | 30                                      |
| <b>H10. Administrative Offices</b>                                 | 4 X 16 m2 = | 64         | (see also open space) 48                |
| <b>H11. Secretariat Pool</b>                                       | 12          |            | 13                                      |
| <b>H12. Meeting Room</b>   | 24          |            | 23                                      |
| <b>H13. Kitchennete</b>  | 8           |            | 8                                       |
| <b>H14. Staff Restrooms</b>  | 15          |            | 15                                      |
| <b>H15. Area for Reprography</b>                                   | 15          |            | 15                                      |
| <b>H16. Archives</b>   | 20          |            | 21                                      |

| <b>I. MISCELLANEOUS SPACES</b>               |    | <b>305</b> | <b>306</b> |
|--|----|------------|------------|
| <b>I1. STOREROOM</b>                         | 60 |            | 59         |
| <b>I2. WORKSHOP</b>                          | 50 |            | 51         |
| <b>I3. STORAGE</b>                           | 60 |            | 59         |
| <b>I4. ARCHIVES</b>                          | 60 |            | 59         |
| <b>I5. WASTE STORAGE</b>                     | 20 |            | 22         |
| <b>I6. STAFF ROOM</b>                        | 20 |            | 20         |
| <b>I7. LOCKERS &amp; RESTROOMS FOR STAFF</b> | 20 |            | 20         |
| <b>I8. INFIRMARY</b>                         | 10 |            | 11         |
| <b>I9. INFIRMARY'S RESTROOMS</b>             | 5  |            | 5          |

| <b>J. TECHNICAL ROOMS</b>                |     | <b>500</b> | <b>742</b> |
|--|-----|------------|------------|
| <b>J1. TECHNICAL MISCELLANEOUS AREAS</b> | 500 |            | 742        |

| <b>K. PARKING AND DELIVERY</b>          |       | <b>7 800</b> | <b>8932</b> |
|---|-------|--------------|-------------|
| <b>K1. UNDERGROUND PARKING 278 CARS</b> | 7 500 |              | 8498        |
| <b>K2. DELIVERY AREA</b>                | 300   |              | 434         |

| <b>X. EXTRA SPACE</b>   |  | <b>XX</b> | <b>89</b> |
|---|--|-----------|-----------|
| <b>K. BACKSTAGE AND TECHNICAL AREA FOR THEATRE (2nd, 3rd FLOOR)</b> |  |           | 89        |