

## THE CONCEPT OF THE HOUSE OF ART & CULTURE

### **The integration of the House of Art & Culture and its urban environment**

The building of the House of Art & Culture is proposed as a simple cube, called The Art Cube which presents the pure, geometric, abstract and eternal inspiration from artistic world, especially from the essence of the form of Arabic culture.

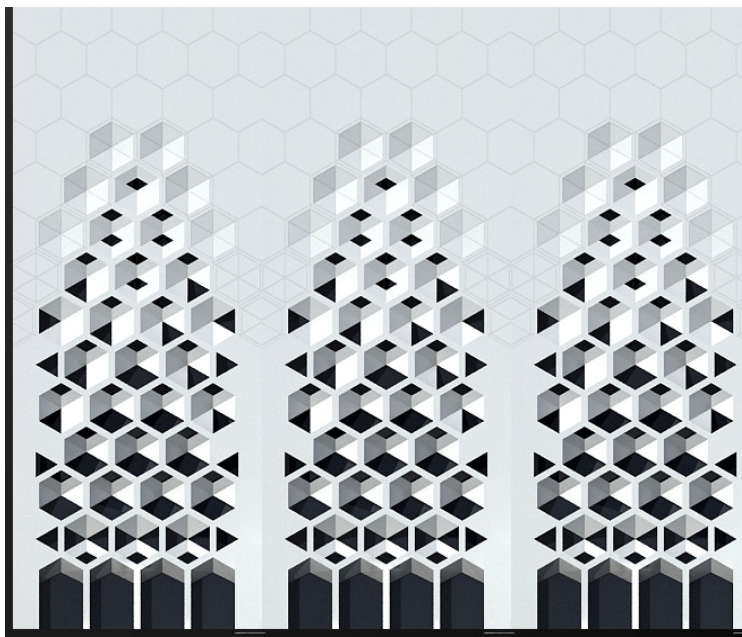
The Art Cube assumes two functions in its urban context. The mixture of different physical forms of surroundings, the traditional and the modern, the Arabic and the European, the artistic and the daily poses the problem of the lack of integration. The form of the cube, on the one hand, is distinct itself from its environment and reinforces the spirit of the city life of Beirut, the creation and freedom of thought. On the other hand, The Art Cube in its pure and abstract form can achieve the inclusive ideas to comprehend the mixed nature and diversity of cultural components.



The skin of the cube is textured by matrix of hexagons which are closed, windowed and opened reflecting not only the different lighting pattern of the interior space but also the geometric images of the Islamic decoration element. The hexagons caved in the body of the cube create the wave of the facade which stands out and expresses the mediation between the cube and its surrounding buildings.



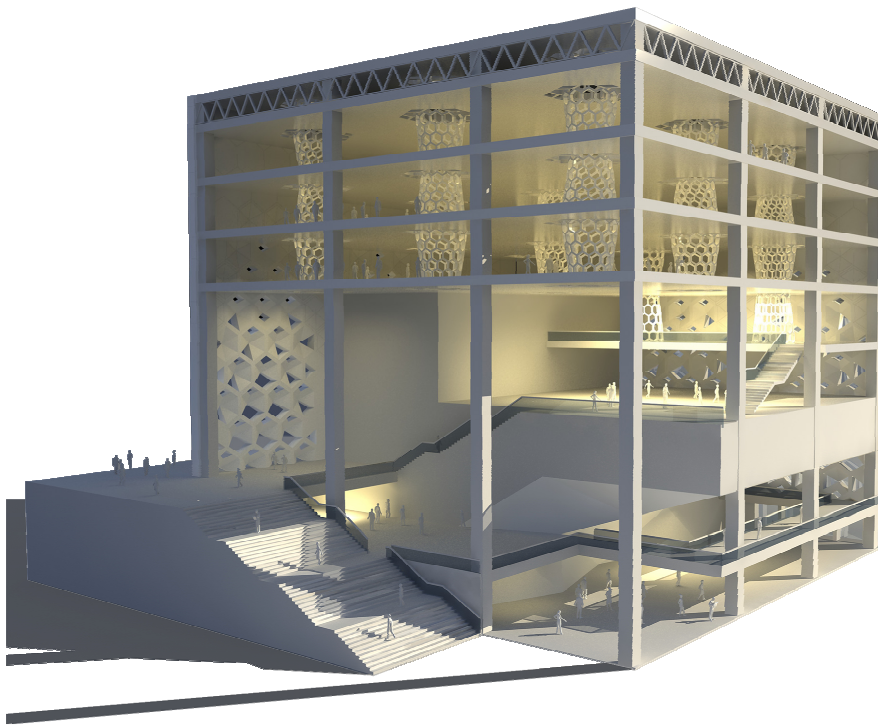
The images of Islamic buildings



The skin of the Art Cube

### **The integration of functional spaces and structural system**

The Art Cube proposes an integration of functional spaces and structural system. The structural system creates two major components of interior space, the lower part for the reception & information, performance & conference halls, cinemas and exhibition spaces which the grand spaces are required, the upper part for relatively small spaces, the workshops and training rooms, documentation centre and so on. The assumed structural system proposes the solution to the difficulty of the functional requirement, the big spaces in the lower part and the small spaces in the upper part. It is achieved by a huge hanging system with nine vertical and dimensional structures in upper part.

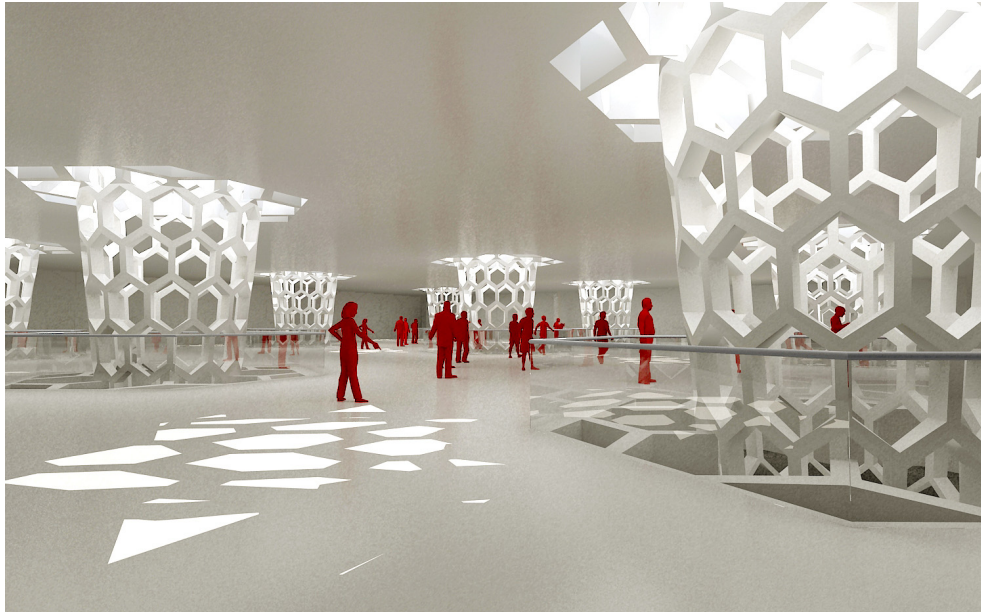


The special upper system frees the lower spaces for flexible use. Therefore, the possibilities are generated not only for grand performing hall but also for the series of vertical atriums and foyers in the lower part of the building. The nine vertical suspending structures function as the major structure components as well as the natural ventilation and lighting system.



The lower part of the building --- the series of vertical atriums and foyers

The upper functional spaces can be subdivided around the nine artificial elements. Because of the freedom from the dense structural columns, the flexibility of organizing the spaces in the upper part of the building is possible.



The upper part of the building --- the structure components as the natural ventilation and lighting system

### **The integration of the structural system and energy saving system**

The spaces of the Art Cube are covered mostly by closed skin and are opened to the internal “light columns” which are created by the vertical hanging structures. The closed facade can reduce the energy consuming. The vertical hanging structures serve as not only the natural lighting passages but also the natural wind tunnels together with the series of atriums to form the passive ventilation system.