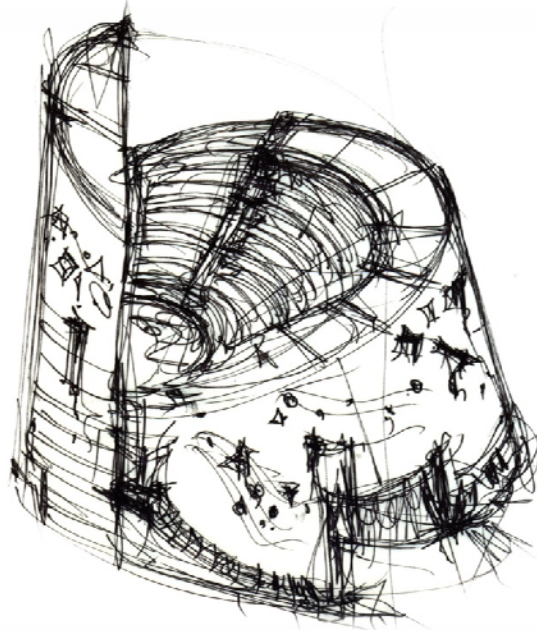


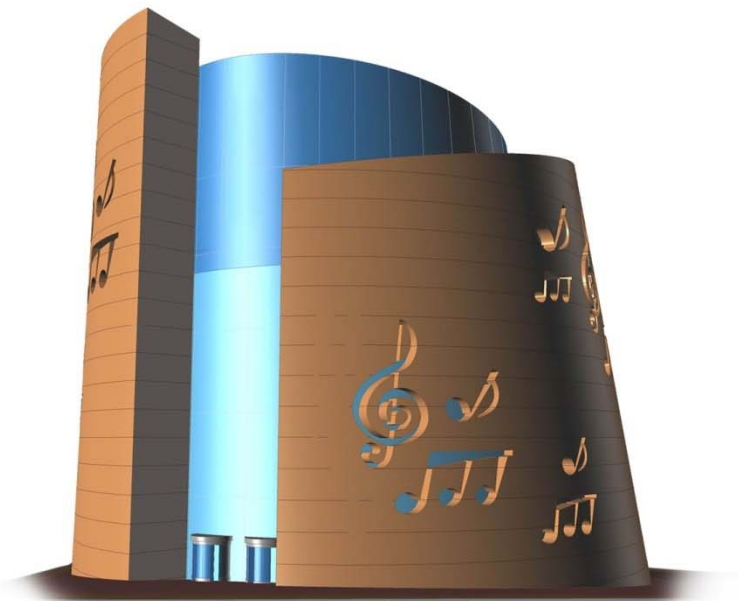
House of Art & Culture in Beirut, Lebanon

Report:

1)The House of Art is a big Theatre can Be visible From the Main Street.



2)The House of Art Should Have Strong Image.

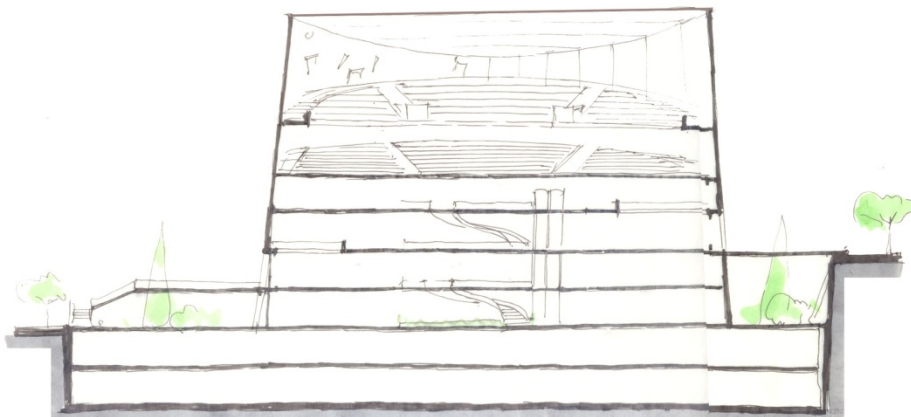


3)Special Facade Treatment (MUSIC SIGNs AS WINDOWS)



4)Topography:

Enables Us to Access the Project From a Middle Floor



Summary of Surface Areas

Spaces	AREAS PROGRAMME	AREAS PROJECT
A. Reception, Information	435	400
B. Performance and Conference hall	2,434	3000
C. Exhibition Spaces	1,170	1100
D. Work and Training rooms	670	550
E. Documentation Centre	640	550
F. Cinematheque	273	300
G. Cafeteria and commercial spaces	510	400
H. Administration	451	600
I. Miscellaneous Spaces	305	400
J. Technical rooms	500	600
K. Parking and delivery	7,800	7800
TOTAL USEFUL SURFACE	15,188	15700
Horizontal and vertical circulation	700	1800