

House of Arts and Culture educates the Lebanese youth.
They create Lebanese culture for next generation.

Roof - Energy

Sunlight is shut out in large eaves.

Outside - Terrace

This building has the terraces in various places.

Pattern of wall

This building has a lattice wall.

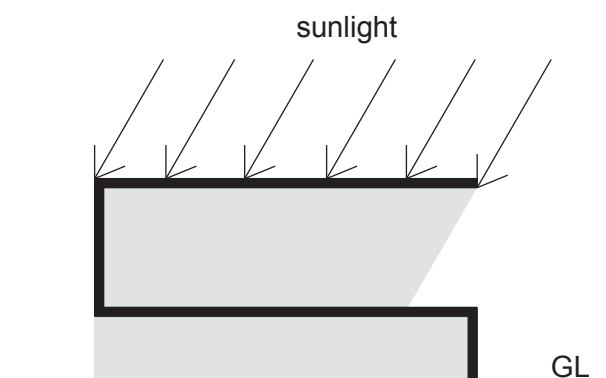
As a result, an internal space like an external space exists.

Cityscape

This building is open for the city.

The person's behavior is seen from the outside.

→ Activity (Dynamism of form) = Creativity



Japanese lattice wall

Form - Twist

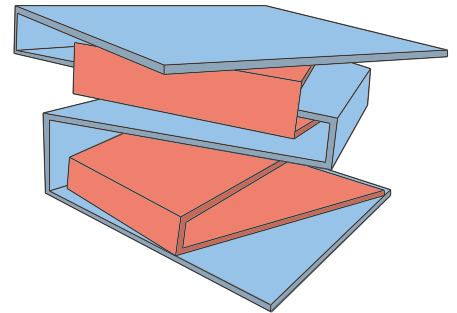
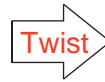
1, Various cultures influence a Lebanese culture. Especially, a French culture strongly influences it. Therefore, Lebanon is called "Paris in the Middle East".

Two slabs means two cultures to Lebanon

Lebanese :



French :

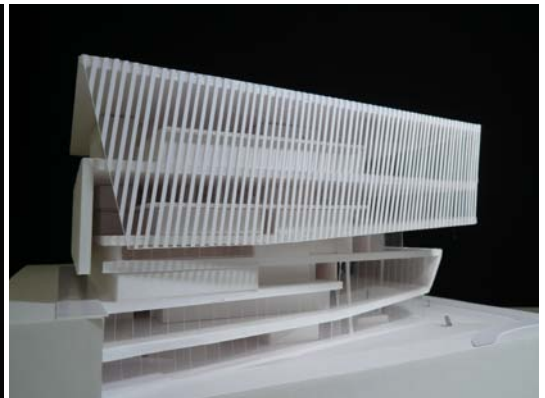
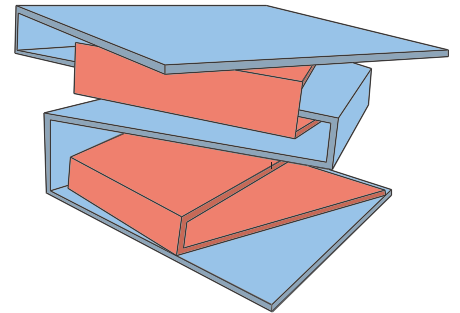


2, Theme of competition - House of Arts and Culture

Art :

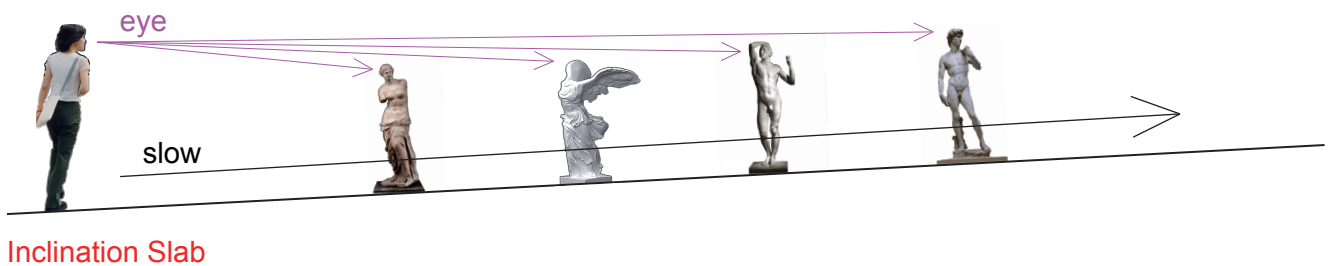


Culture :



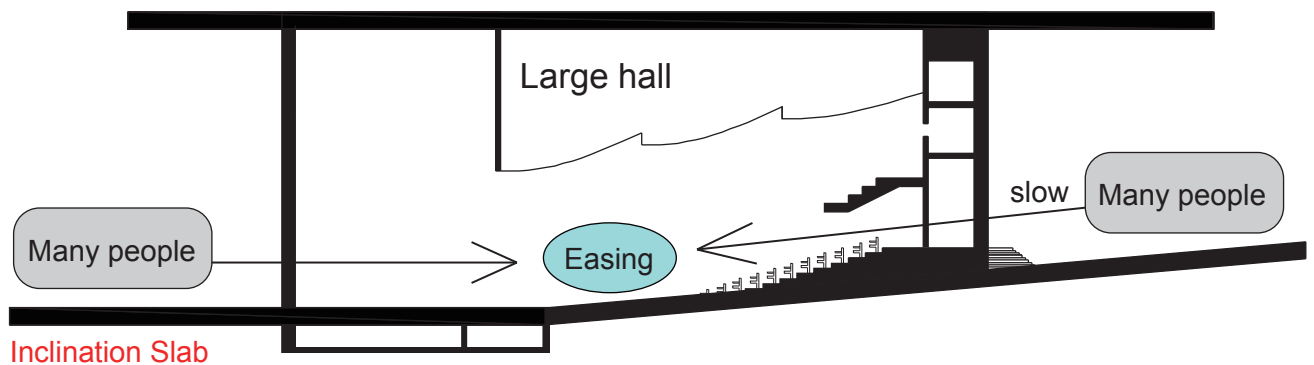
Exhibition Space

The floor in the exhibition space inclines gradually.
This is because this floor makes visitor walk slowly.
As a result, they slowly appreciate the exhibit.



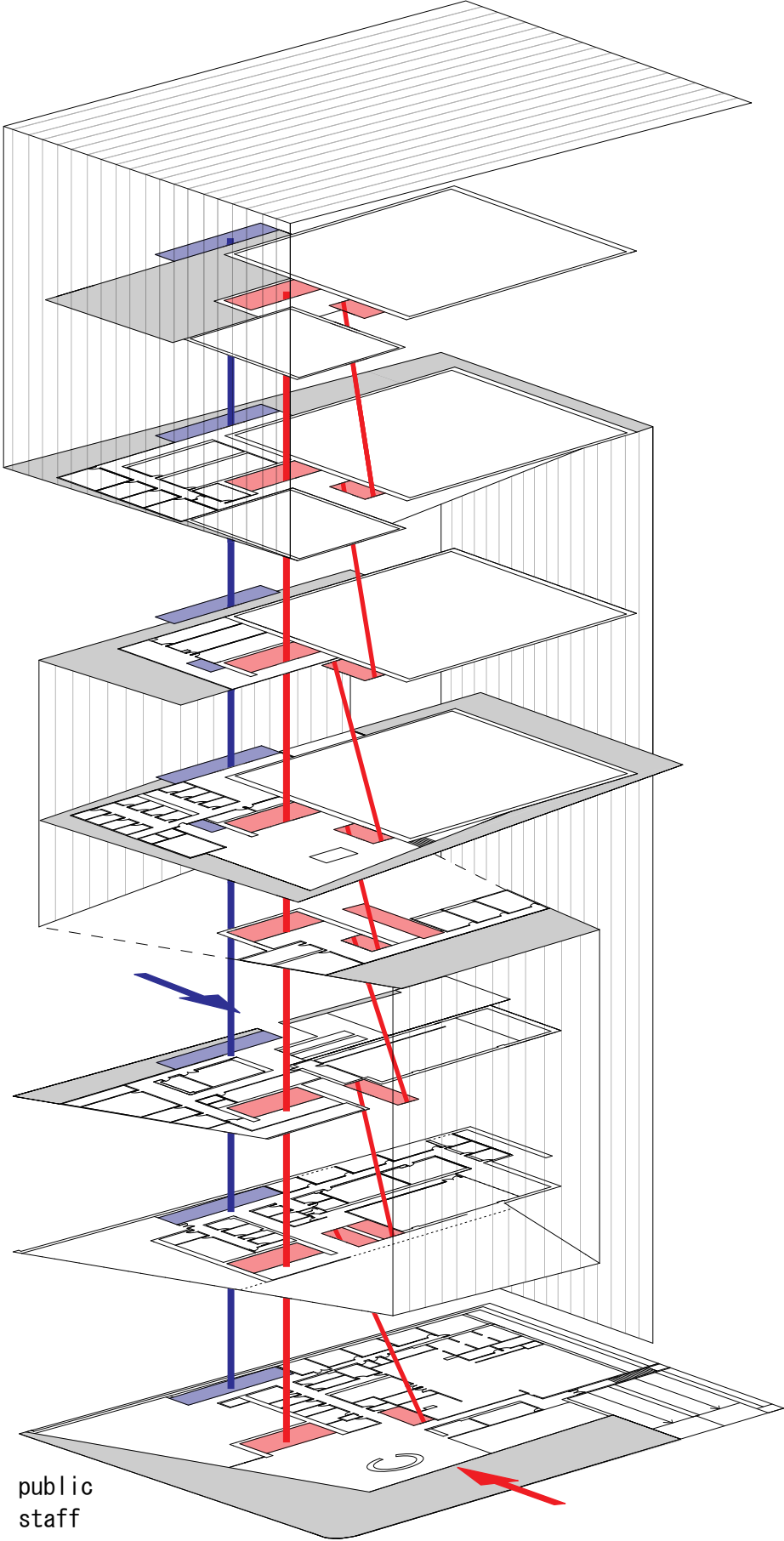
Large performance and conference hall

800 people go in and out from the large hall.
The floor in front of the large hall inclines by 1/12.
This is because large hall user's flow is made gradual.



Circulation diagram

ROOF LEVEL	+31950
8F LEVEL	+26350
7F LEVEL	+22350
6F LEVEL	+18250
5F LEVEL	+14650
4F LEVEL	+12000
3F LEVEL	+8000
2F LEVEL	+3500
1F LEVEL	-1000



- public
- staff
- terrace