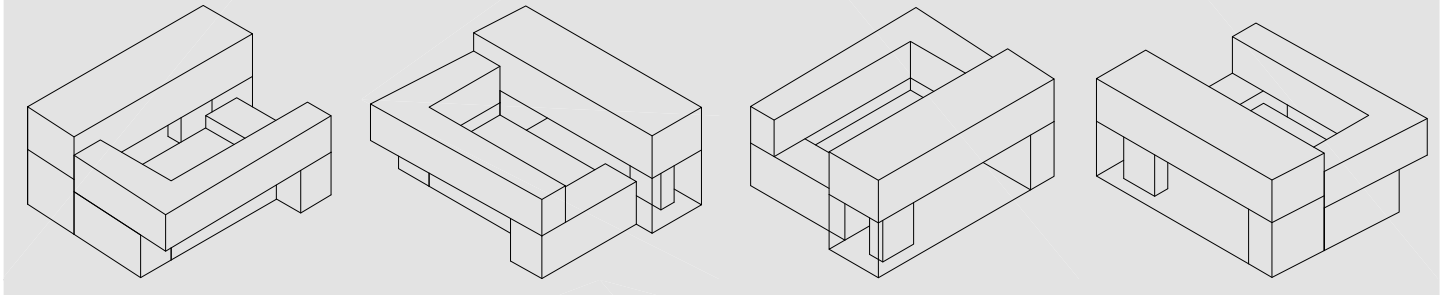
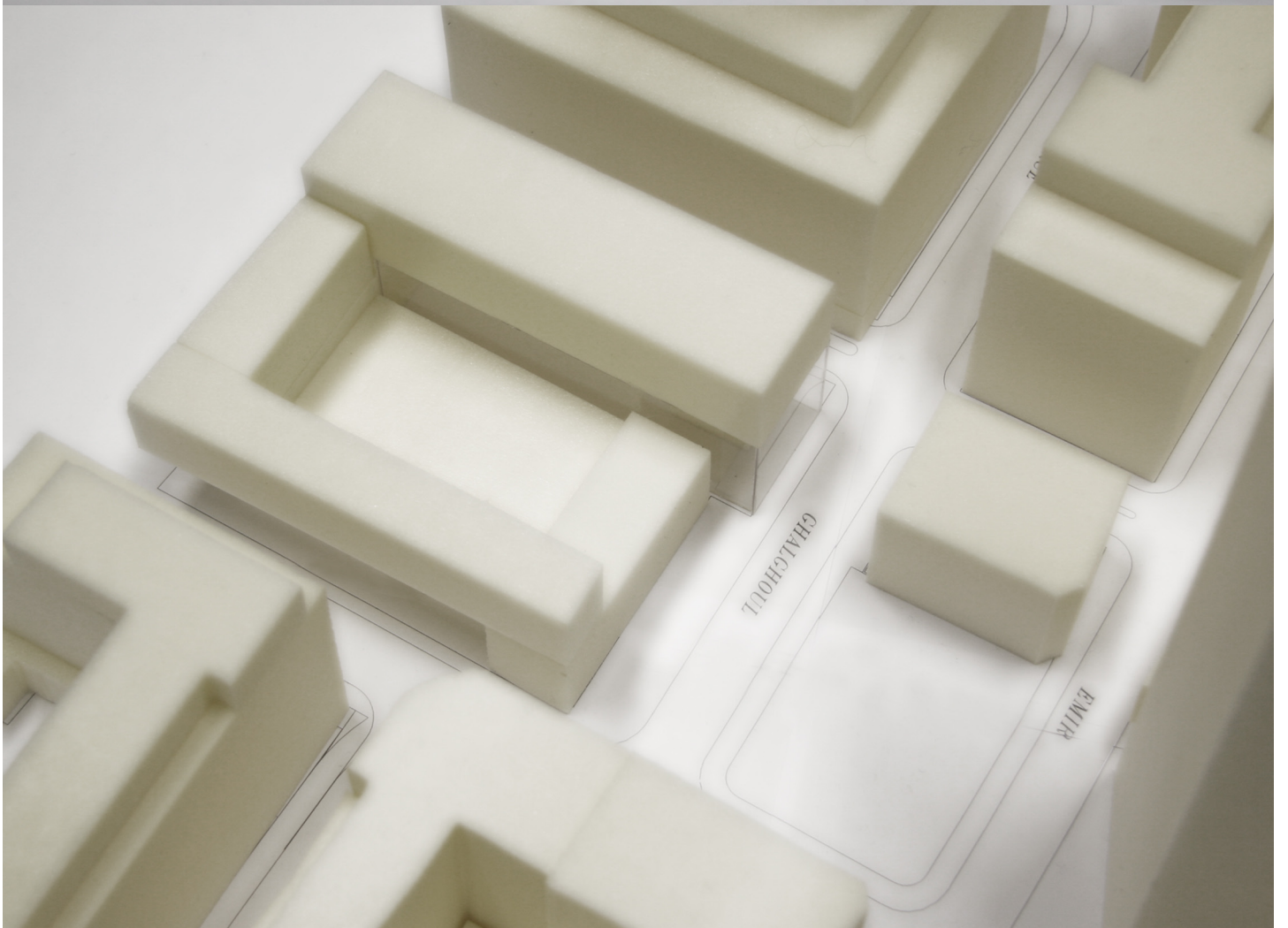
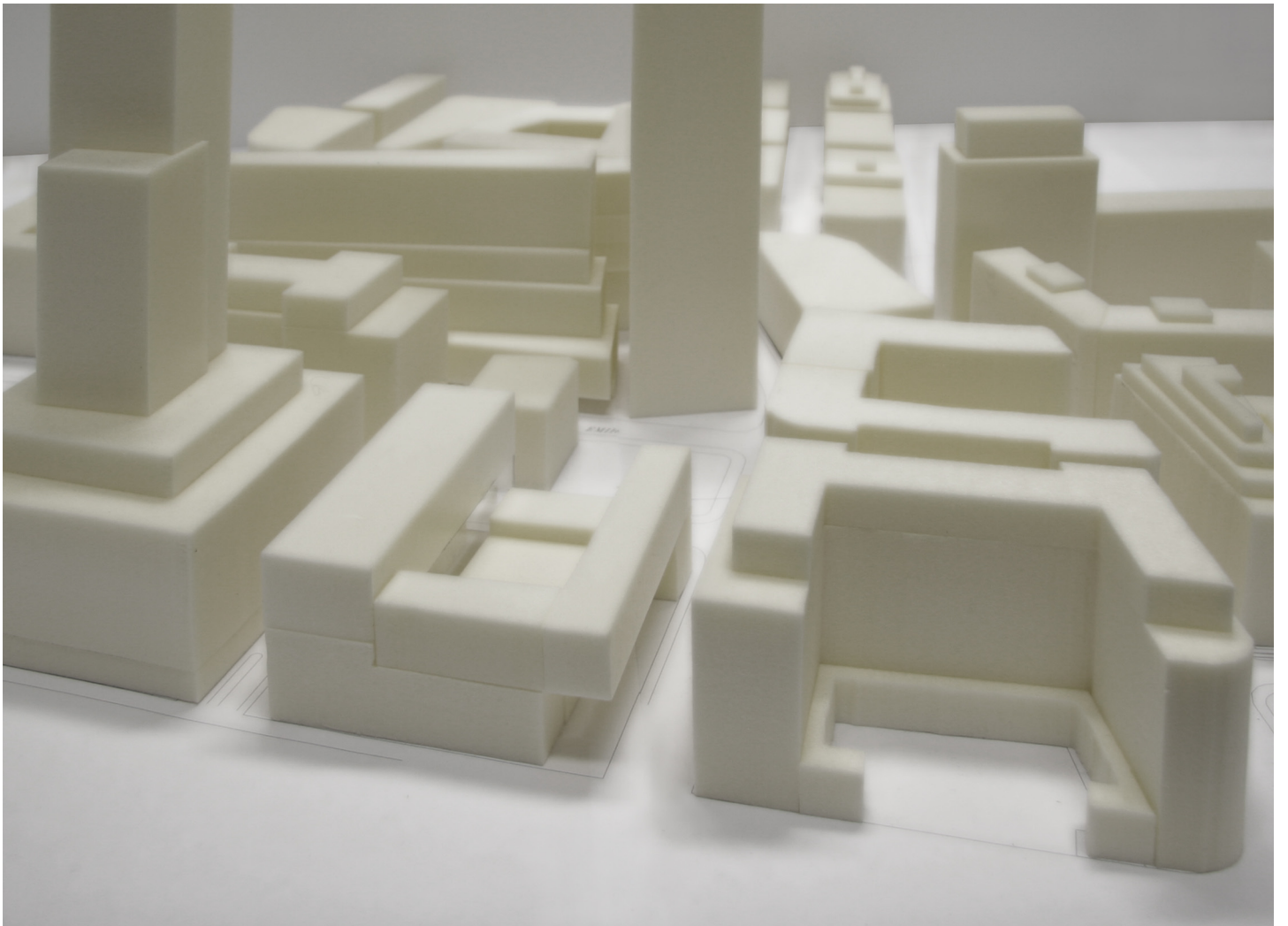
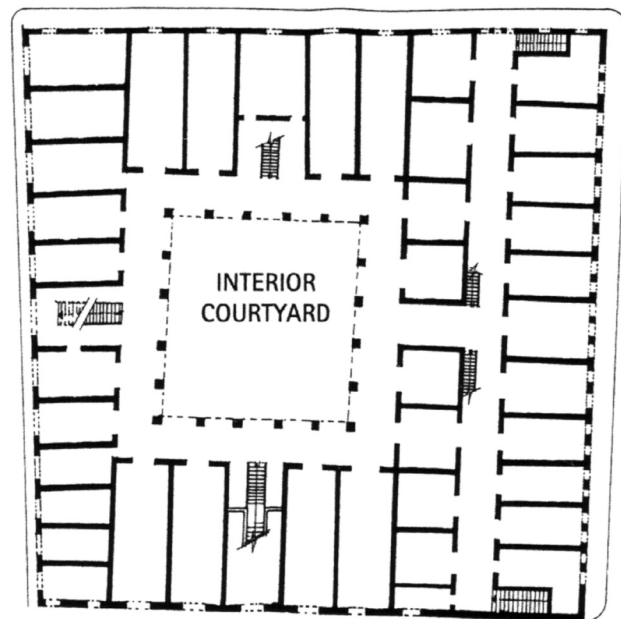


The HOUSE OF ARTS & CULTURE The Lebanese-Omani Centre

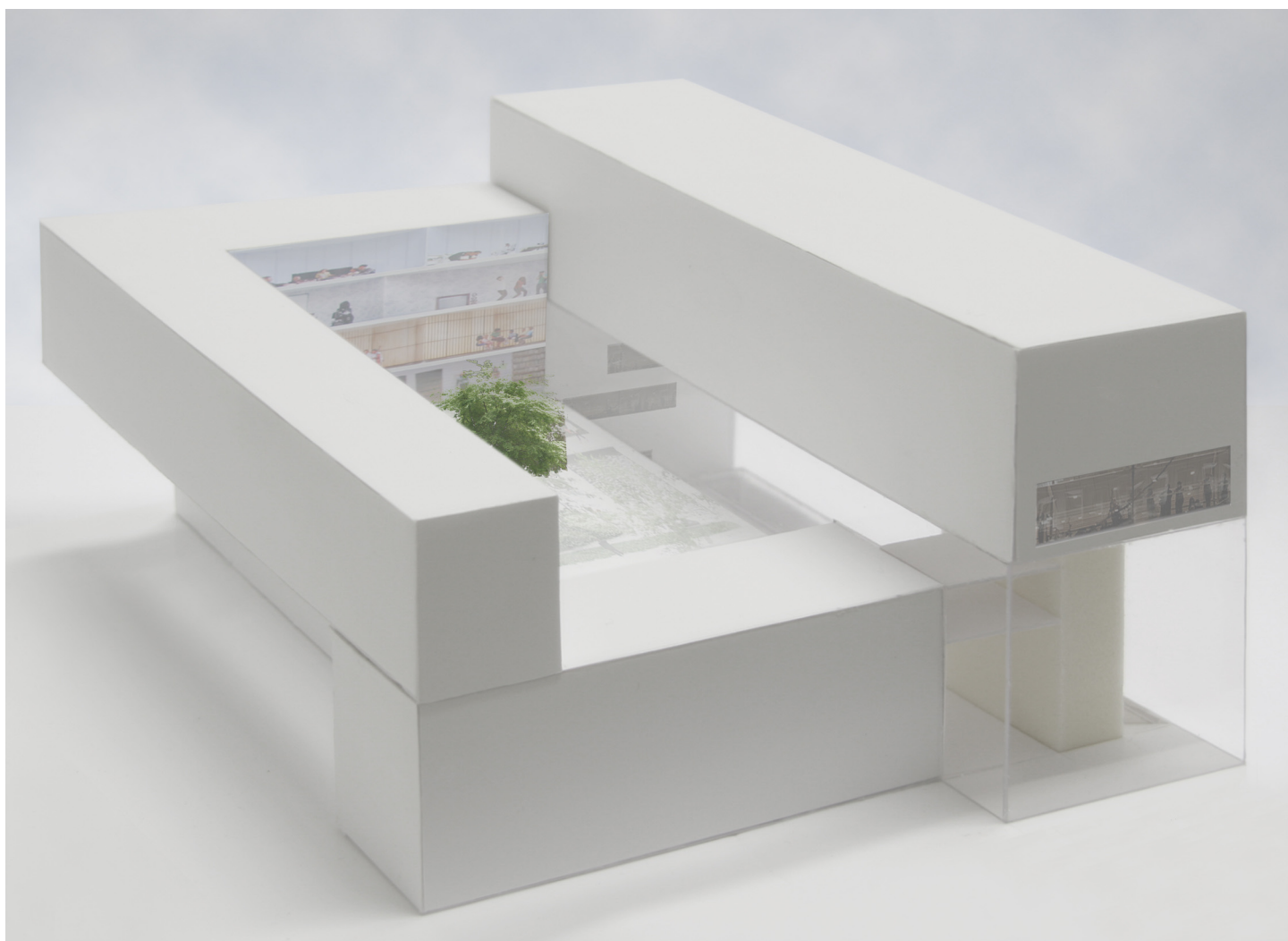


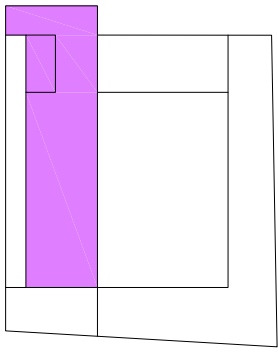
- Vitality** The building is a significant and confident sign which transports the spirit of the HOUSE OF ARTS & CULTURE to its surrounding and invites people to participate.
- Location** The site is located on the border between the city district and the high speed road.
- Permeability** Exploring the idea of a dynamic and vivacious centre we propose a building with a high degree of permeability.
- Appearance** The building sits sovereign on the site and fronts all directions.
- Courtyard** The scheme deals with the traditional courtyard houses. All functions are orientated towards the inner courtyard which acts as the hub of the HOUSE. It offers a bright atmosphere in the whole building with sensitive nuances of daylight.
- The Performance and Conference Hall is the cultural heart of the building. As a half sunken element it is embedded inbetween the other functions.
- Foyer** The foyer is an inviting open space which is splitted up into two levels. The lower part is partly uncovered in order to achieve interaction.
- Floor heights** The section shows different ceiling heights for different functions.
- Structure** The building is conceived as an exposed white concrete building referring to the traditional stone material.
- Energy** The walls and ceilings provide a sufficient amount of mass for thermal absorption.



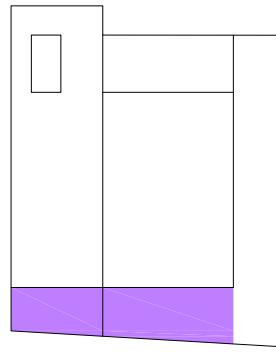


Khan Antoun Bey original plan

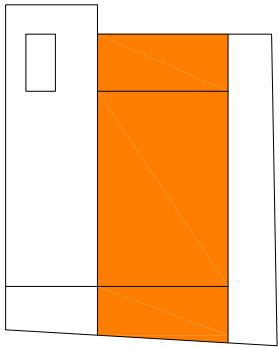




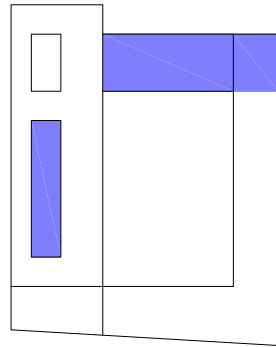
A. Reception Information



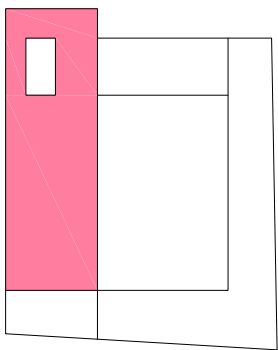
F. Cinematheque



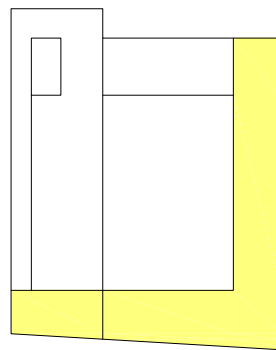
B. Performance and Conference Hall



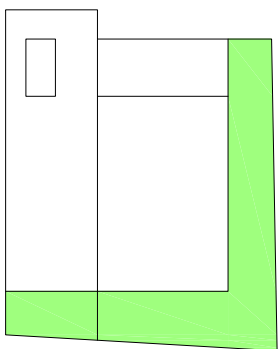
G. Cafeteria and Commercial Spaces



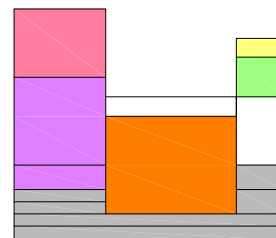
C. Exhibition Spaces



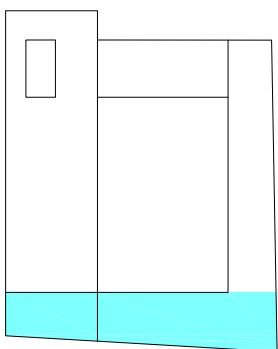
H. Administration



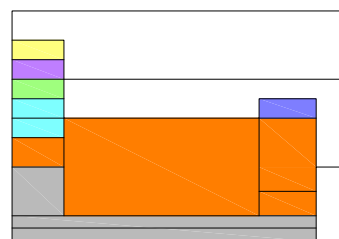
D. Work and Training Rooms



Cross Section



E. Documentation Centre



Long Section