

**General approach and concept**

This design seeks to offer a setting, in both place and space, for the cultural and social life of Beirut.

It is intended to be an open building, which should invite active involvement by people from all aspects of Lebanese society.

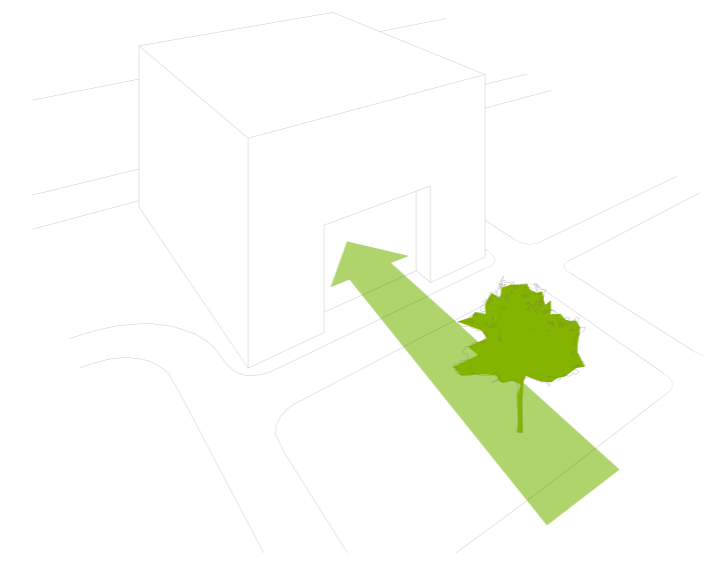
We have conceived of the House of Arts and Culture as a very public urban building with direct links to the nearby public square. Strongly rooted in the urban fabric of the city, the building is to offer easy access to art and culture and is aimed at diverse groups of domestic and international users.

Acting as a stage itself, the building will specifically be there to attract a young and vibrant [inter]national art scene.

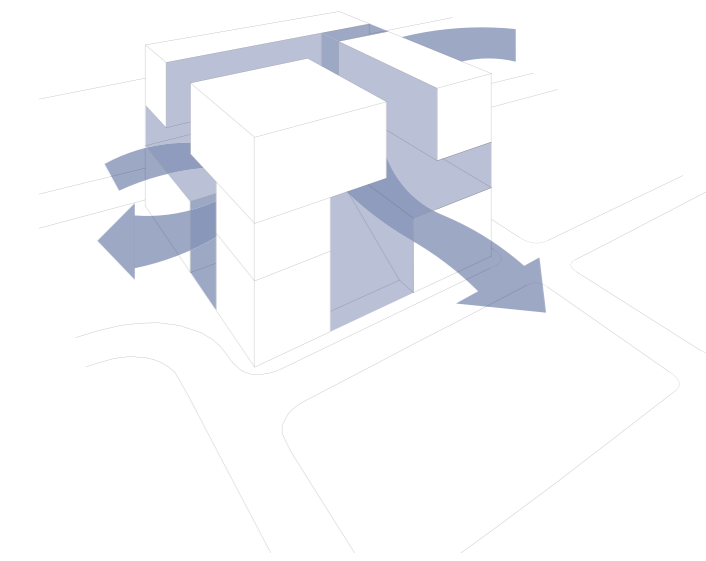
The little Square in front of Bacri House will act as the connection between the House, the nearby Place d'Etoile and the adjacent urban surrounding. The visitor's entrance to the building is via a broad open staircase leading to the main plateau which will serve as the counterpart to the public space outside.

The spatial strategy of the building uses a number of sculptural volumes. These spaces refer to one another by enclosing what we conceive of as an urban interior. A variety of vistas will visually link this core space to the exterior urban context and thereby strengthen the relationship between the building and the city.

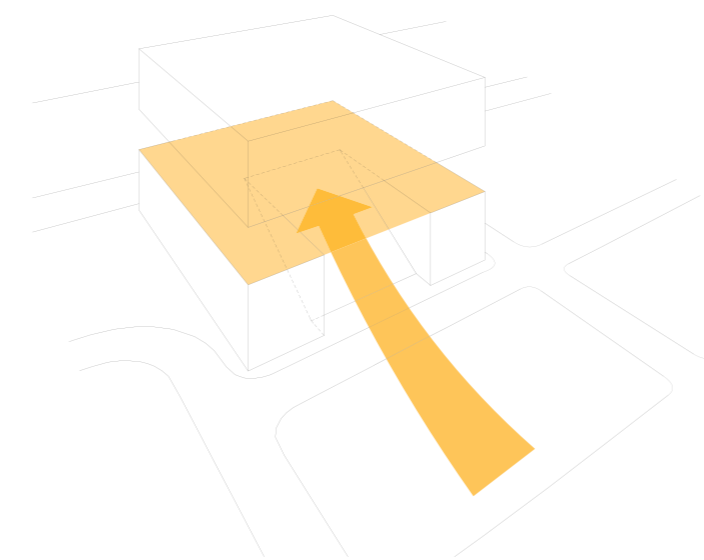
These volumes express a welcoming to the historic city centre while simultaneously offering a protective face towards the busy Ring Road where a solid cantilevering form acts as a shield preserving a calm and relaxing space in between.



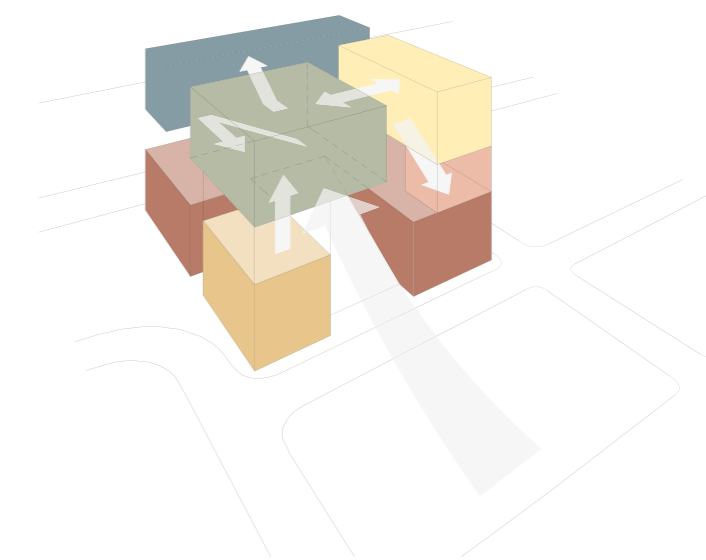
public realm



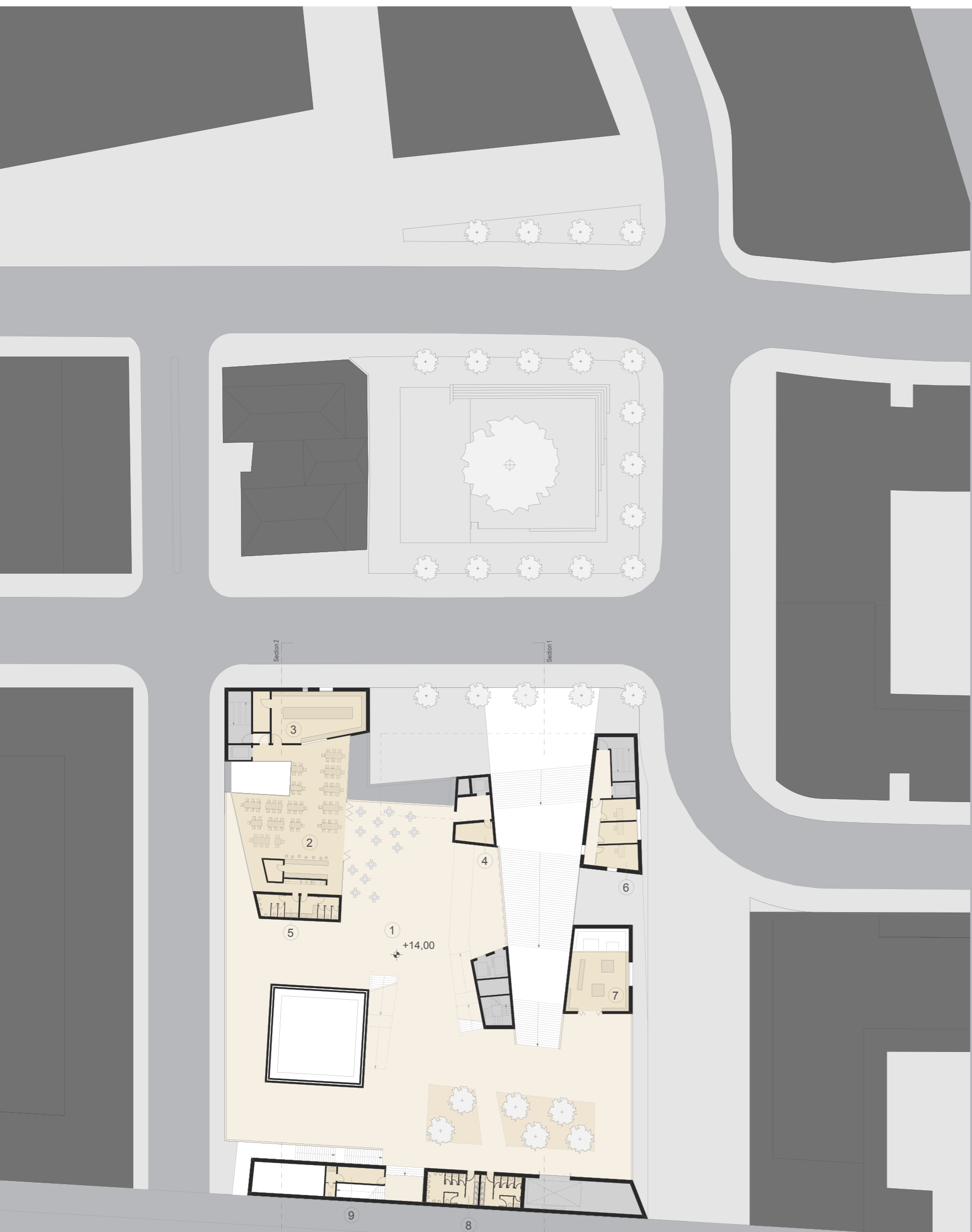
urban interior



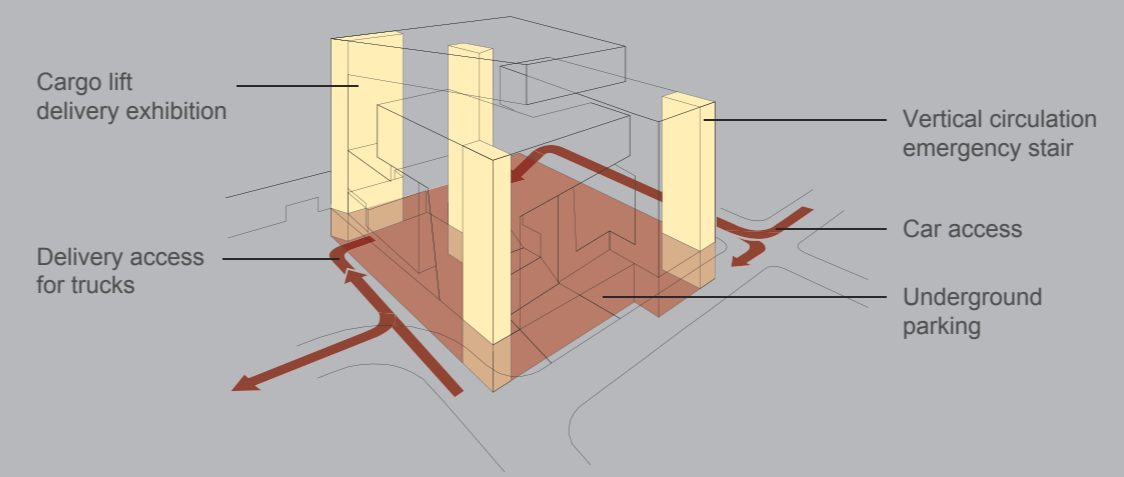
public square



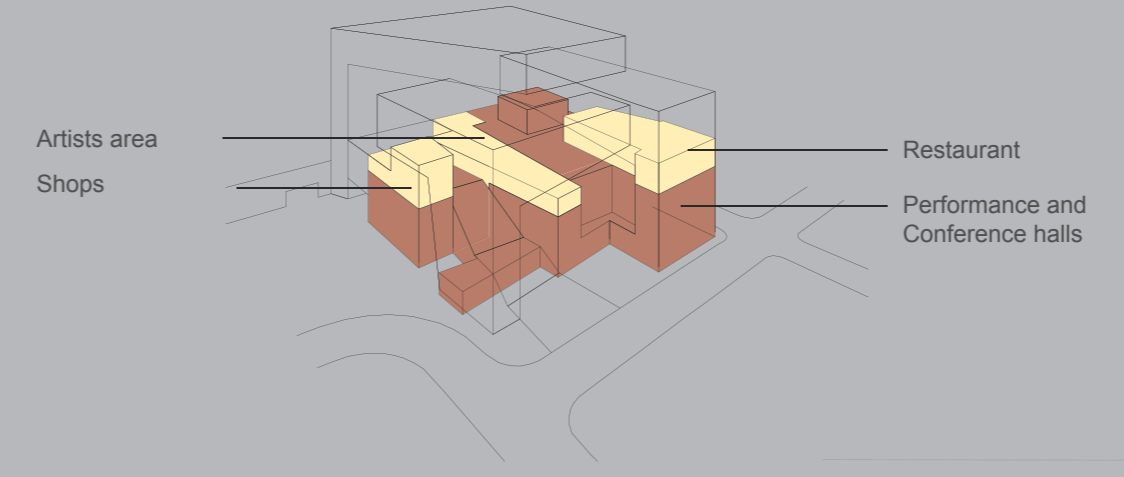
three dimensional network



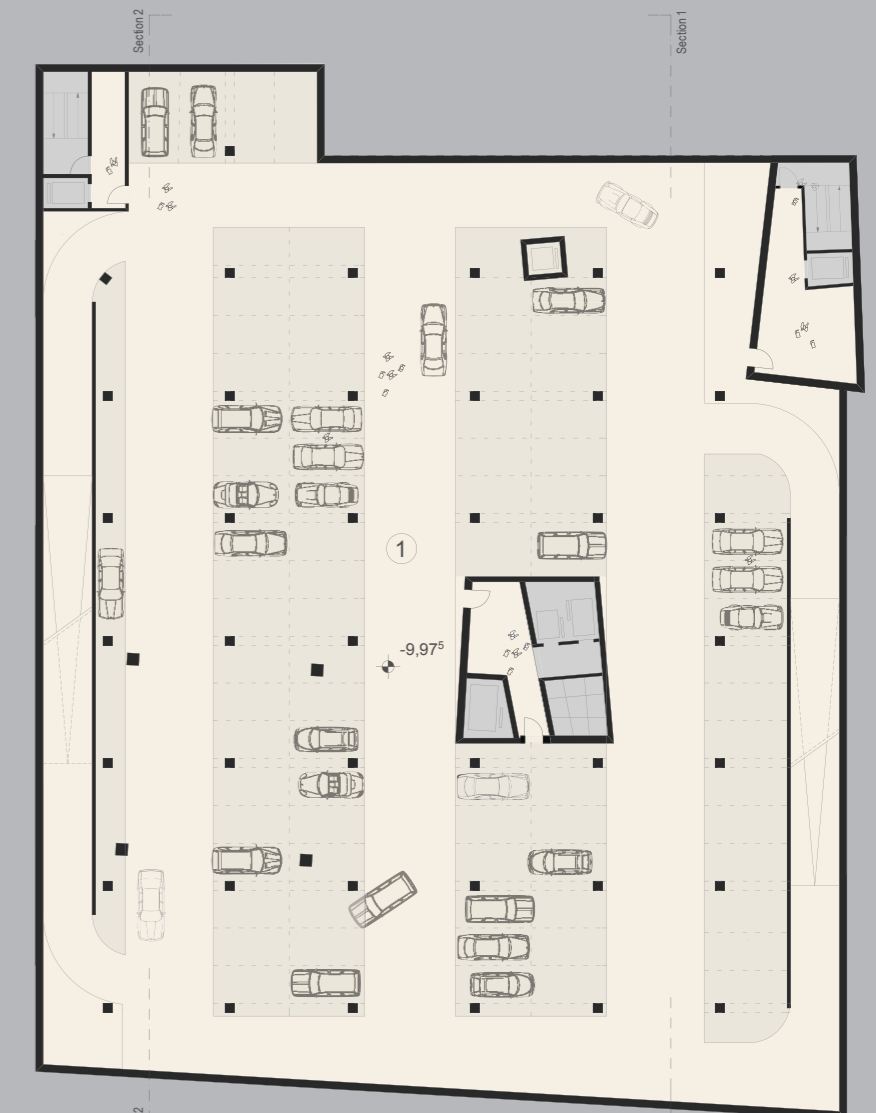
Site plan 1:500



Cargo lift delivery exhibition  
Delivery access for trucks  
Vertical circulation emergency stair  
Car access  
Underground parking



Artists area  
Shops  
Restaurant  
Performance and Conference halls



Underground parking 1:500

- 1 Public square B1
- 2 Restaurant G1 238 m<sup>2</sup>
- 3 Kitchen G1 91 m<sup>2</sup>
- 4 Storage restaurant G1
- 5 Public restroom G1 30 m<sup>2</sup>
- 6 Offices documentation E4 44 m<sup>2</sup>
- 7 Shops, boutiques G2 62 m<sup>2</sup>
- 8 Public restroom A5 49 m<sup>2</sup>
- 9 Infirmary + restroom I8 17 m<sup>2</sup>

- 1 Ticket offices A2  
Information desk A3 69 m<sup>2</sup>
- 2 Large performance and conference hall 431 m<sup>2</sup>
- 3 Lounge B1
- 4 Small multimedia performance hall 310 m<sup>2</sup>
- 5 Lounge B5 143 m<sup>2</sup>
- 6 Lockers Wardrobe
- 7 Storage equipment furniture I3 54 m<sup>2</sup>
- 8 Public restroom B3 49 m<sup>2</sup>
- 9 Service entrance
- 10 Workshop I2 Storeroom I1 126 m<sup>2</sup>
- 11 Delivery K2 305 m<sup>2</sup>
- 12 Waste storage I5 21 m<sup>2</sup>



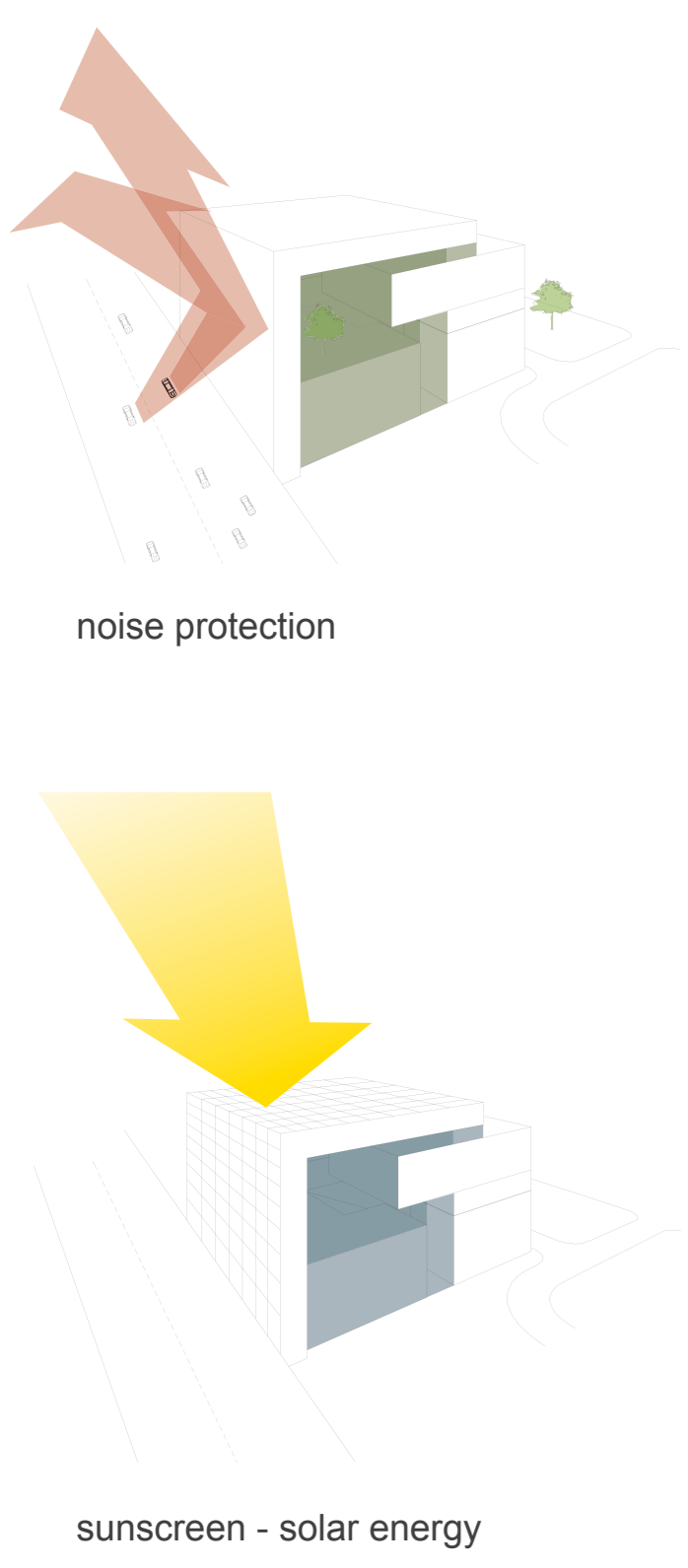
Level 1 1:500



Elevation west 1:500

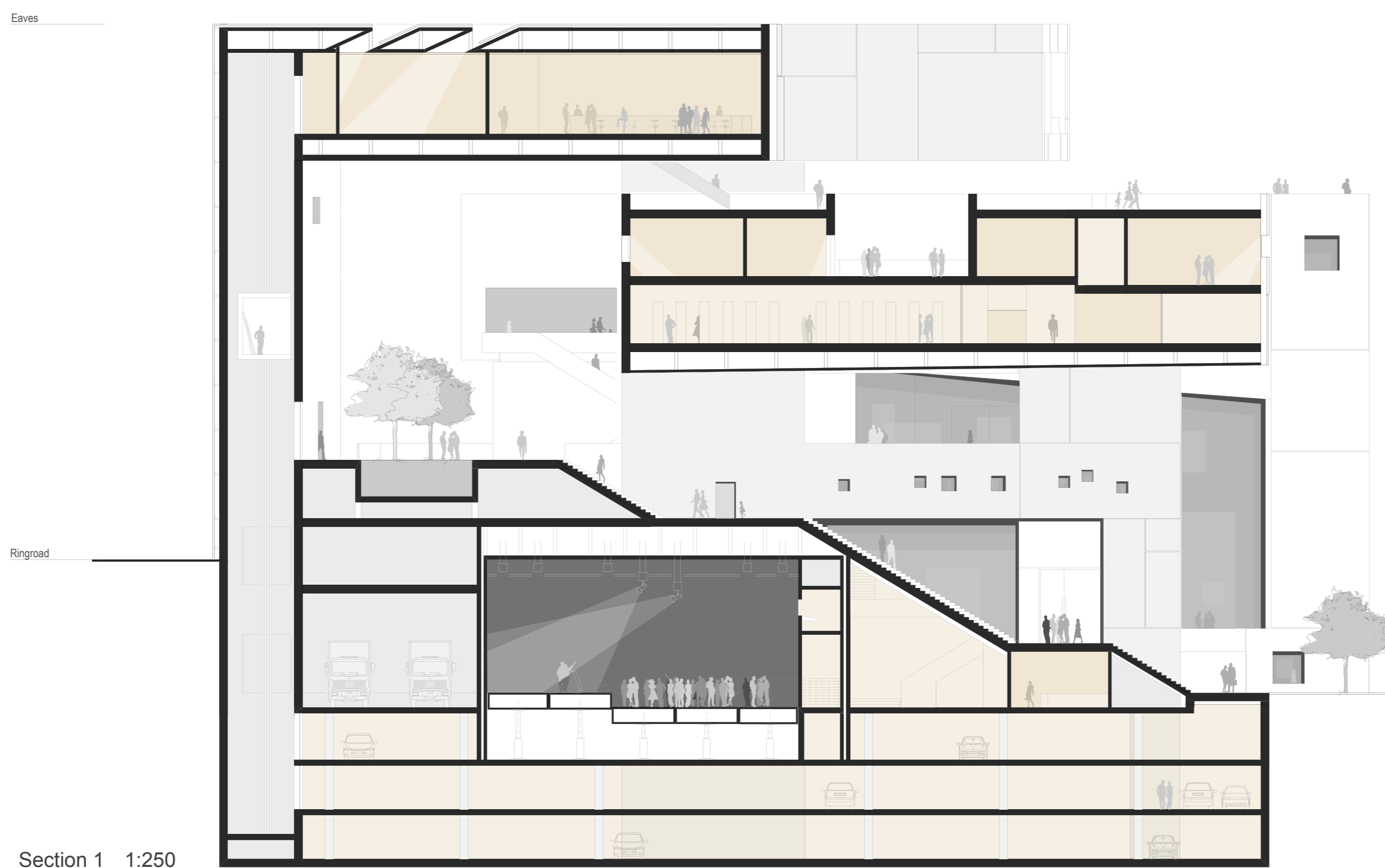


Elevation east 1:500

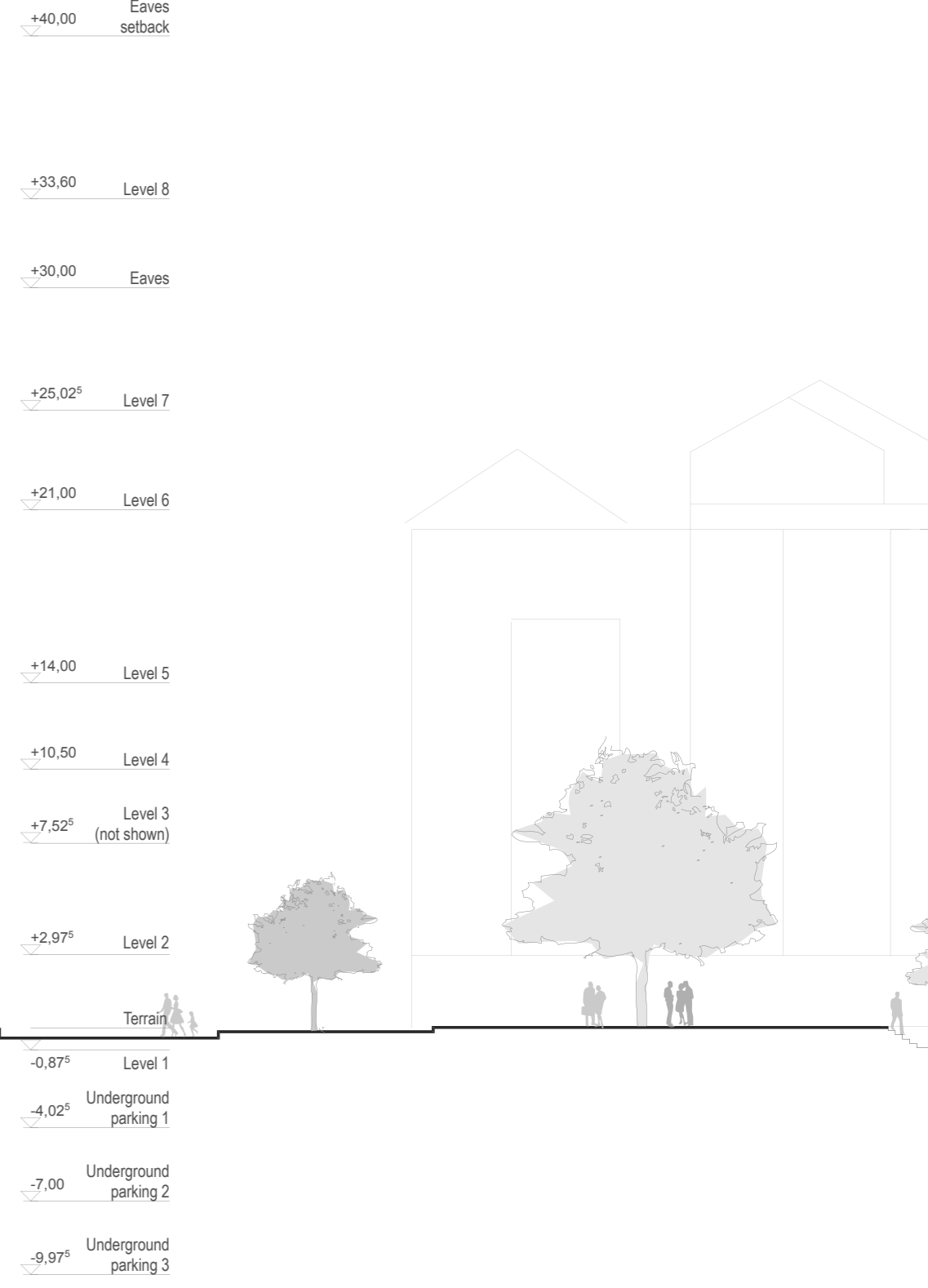


noise protection

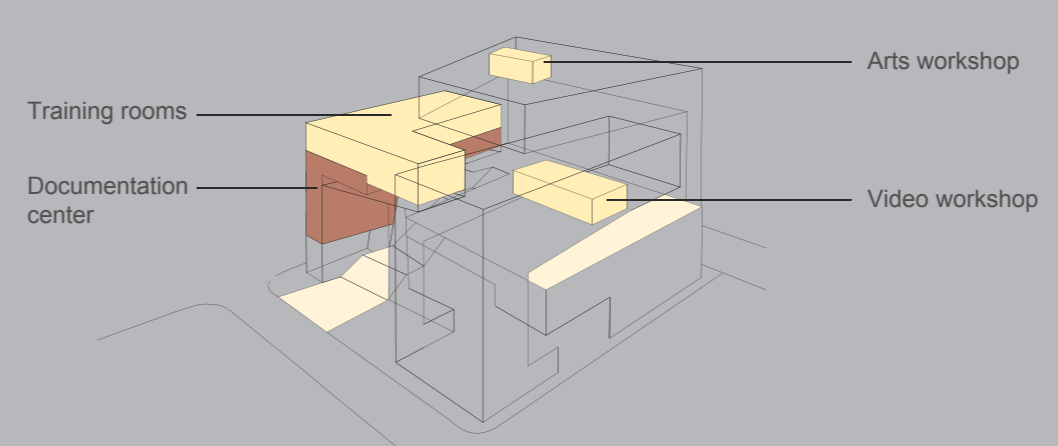
sunscreen - solar energy



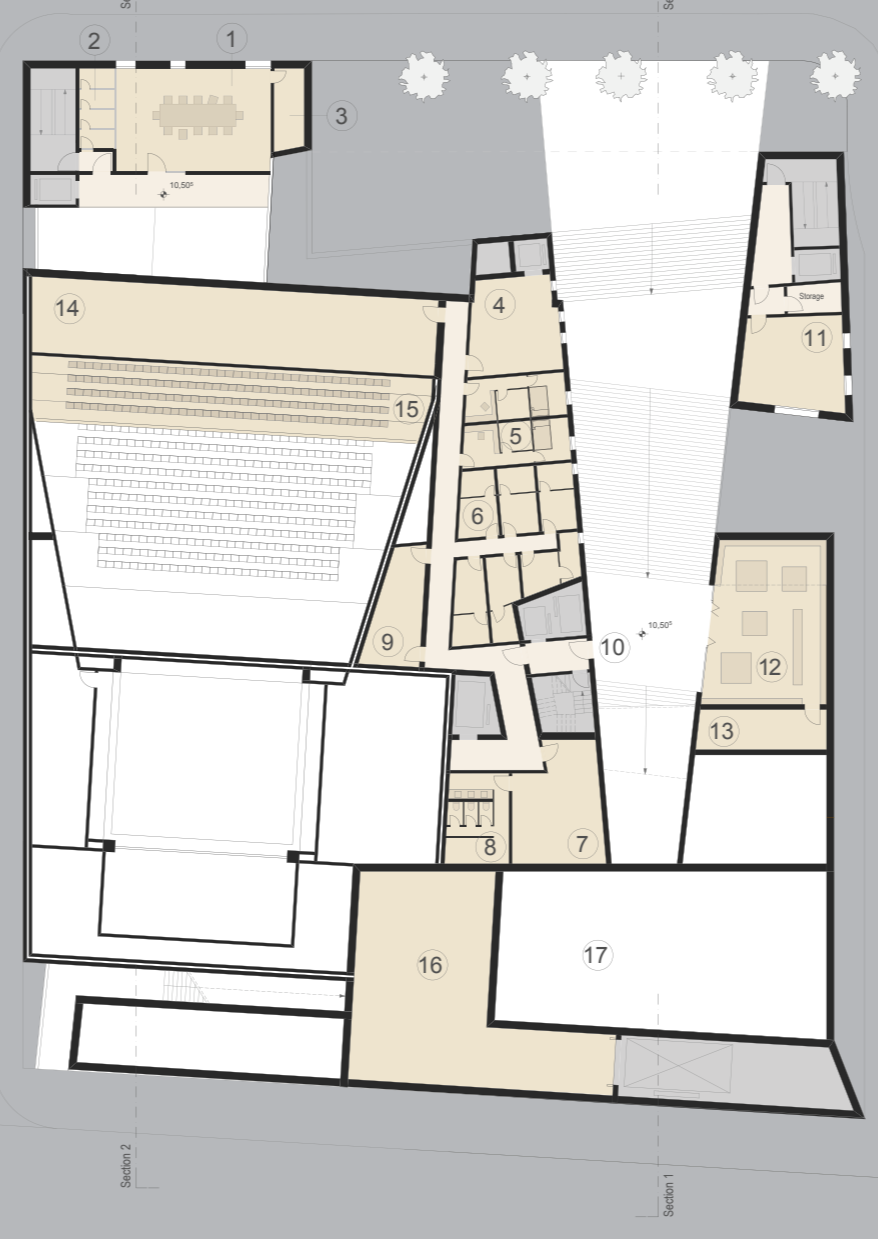
Section 1 1:250



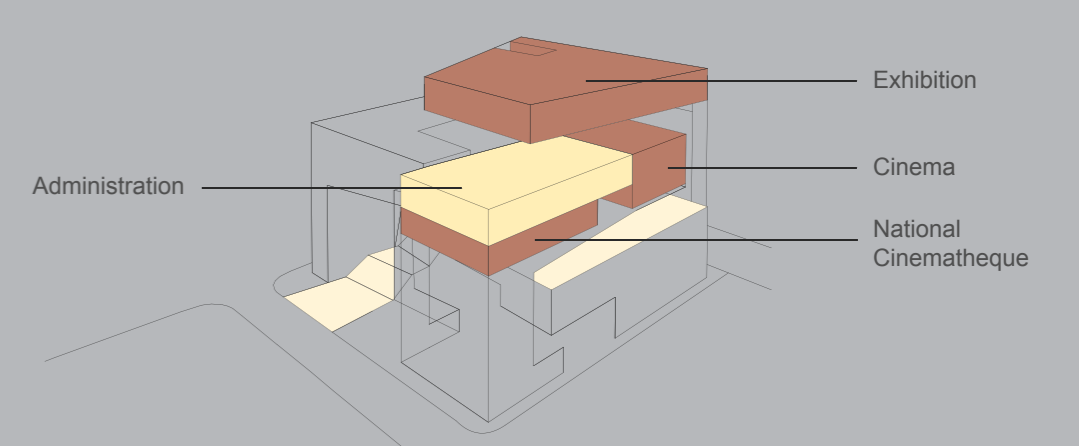
Level 2 1:250



- |  |   |  |
|--|---|--|
| 1 Meeting room B7 70 m <sup>2</sup>                | 6 Individual dressing B6 65 m <sup>2</sup>      | 12 Shops, boutiques G2 84 m <sup>2</sup> |
| 2 Interpretation B7 13 m <sup>2</sup>              | 7 Collective dressing B8 43 m <sup>2</sup>      | 13 Boutiques stock G2 23 m <sup>2</sup>  |
| 3 Projection B7 11 m <sup>2</sup>                  | 8 Restroom, shower B6 25 m <sup>2</sup>         | 14 Storage lightsets                     |
| 4 Artistoyer B6 36 m <sup>2</sup>                  | 9 Mask B6                                       | 15 Tiers 158 seats 114 m <sup>2</sup>    |
| 5 Individual dressing comfort B6 35 m <sup>2</sup> | 10 Artist entrance                              | 16 Technical area J1 160 m <sup>2</sup>  |
|  | 11 Workshops Documentation E5 40 m <sup>2</sup> | 17 Plants                                |



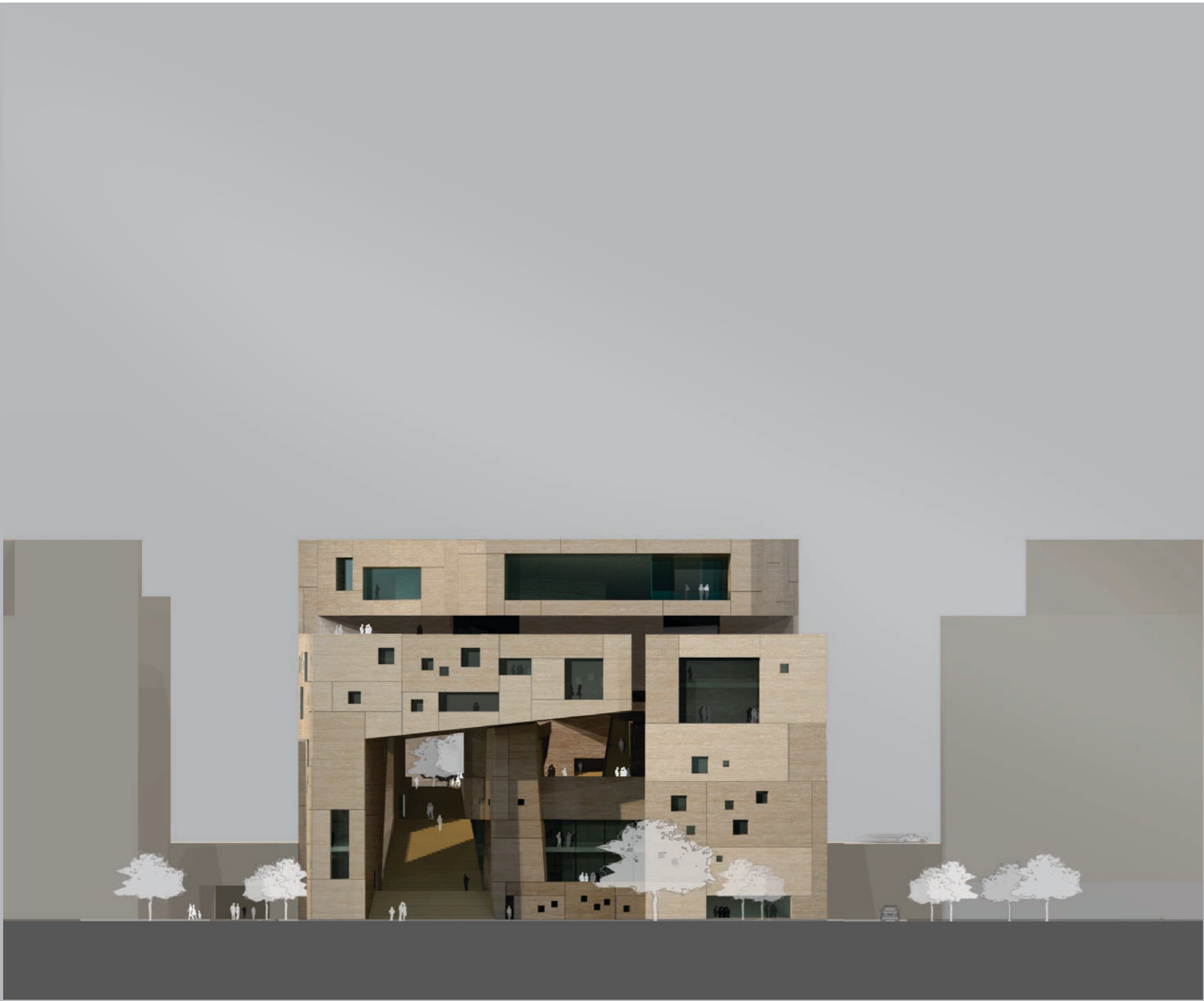
Level 4 1:500



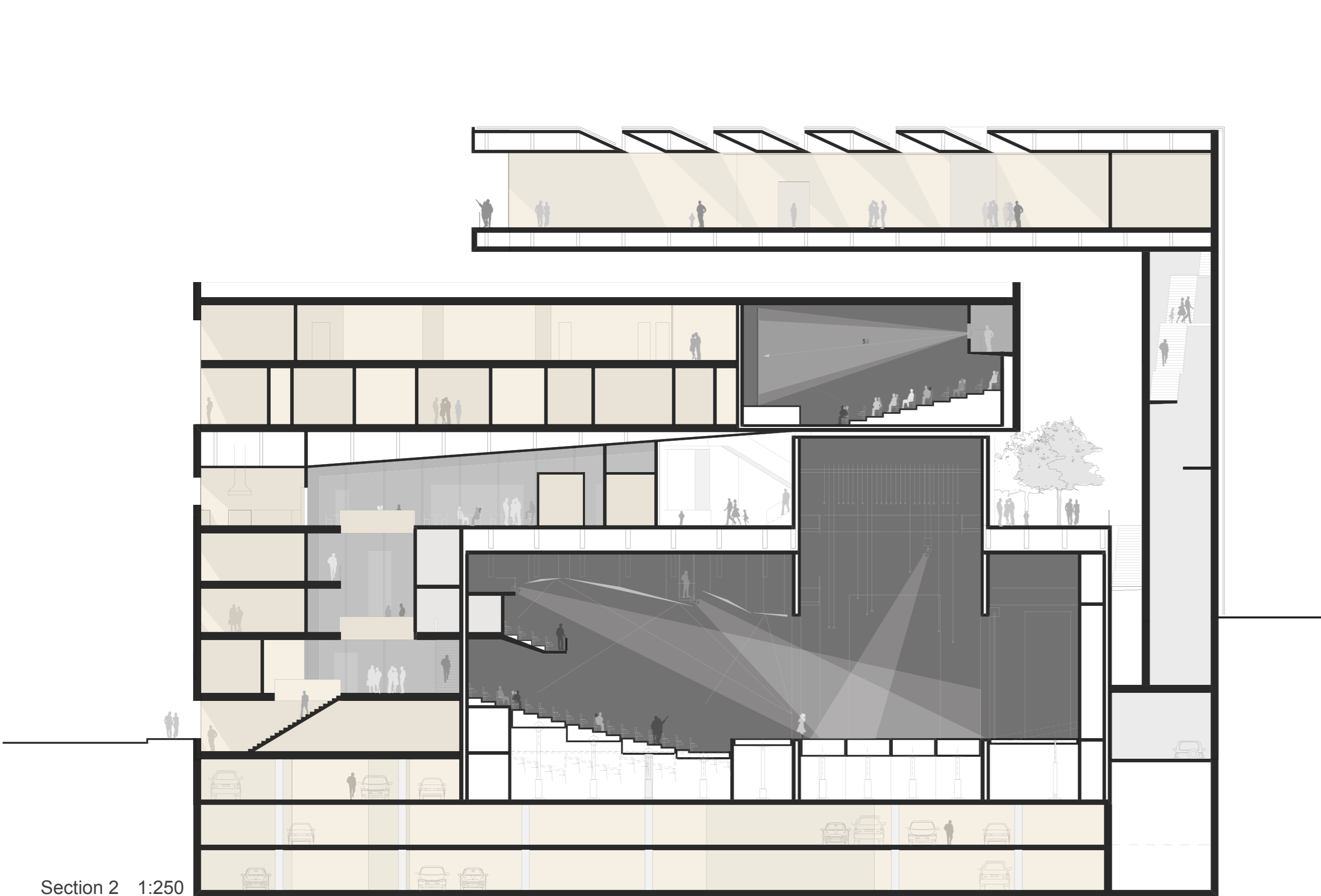
- |   |   |  |  |
|---|---|--|--|
| 1 Shelves E1 303 m <sup>2</sup>             | 7 Restrooms E6 23 m <sup>2</sup>                    | 13 Conservation printing elements F2 51 m <sup>2</sup> | 19 Manager technical service 12 m <sup>2</sup> |
| 2 Reception E1, E2                          | 8 Movie theater 207 Seats B8 222 m <sup>2</sup>     | 14 Workshop copies control F2 21 m <sup>2</sup>        | 20 Manager of distribution 12 m <sup>2</sup>   |
| 3 Storage E2 20 m <sup>2</sup>              | 9 Ticket, Restroom Movie theater                    | 15 Cleaning copies F2 22 m <sup>2</sup>                | 21 Secretariat 13 m <sup>2</sup>               |
| 4 Reading room E1 69 m <sup>2</sup>         | 10 Cinema/Video/editing D1 60 m <sup>2</sup>        | 16 Reception sorting space F2 21 m <sup>2</sup>        | 22 Restrooms 12 m <sup>2</sup>                 |
| 5 Audio/Video stations E2 43 m <sup>2</sup> | 11 Photo Laboratories D1 50 m <sup>2</sup>          | 17 Projection copies F2 25 m <sup>2</sup>              | 23 Staff office 24 m <sup>2</sup>              |
| 6 Study room E3 50 m <sup>2</sup>           | 12 Conservation positiv copies F2 65 m <sup>2</sup> | 18 Curator F1 12 m <sup>2</sup>                        |  |



Level 6 1:500



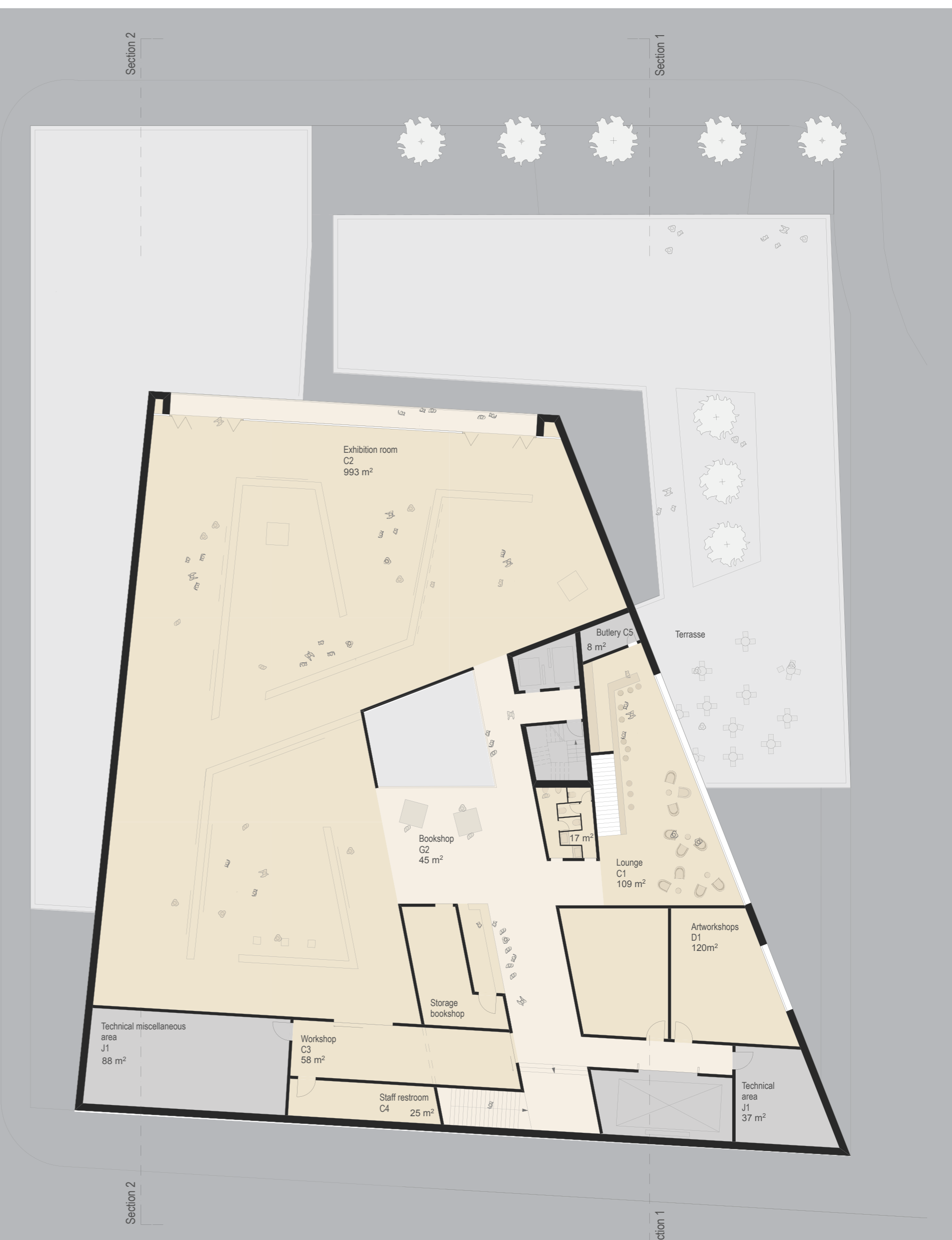
Elevation north 1:500



Section 2 1:250



Level 7 1:250



Level 8 1:250